

North Yorkshire County Council**Executive****29 January 2019****School Admission Arrangements for the School Year 2020/21****Report of the Corporate Director – Children and Young People’s Service****1.0 Purpose of Report**

- 1.1 To seek views from Members on the response to the proposed admission arrangements for Community and Voluntary Controlled schools for the school year 2020/21 and to seek approval for recommendation to the County Council for determination.**

2.0 Issues and Background

- 2.1 As the Admission Authority for all Community and Voluntary Controlled schools in North Yorkshire, the local authority consults annually on admission arrangements. The local authority is currently required to determine its admission arrangements, which includes admission policy and admission limits, annually by 15 April each year. When changes are proposed to admission arrangements, all admission authorities must consult by 1 March on their admission arrangements. Where the admission arrangements have not changed from the previous year there is no requirement to consult, subject to the requirement that admission authorities must consult on their admission arrangements at least once every 7 years, even if there have been no changes during that period.
- 2.2 Consultation must last for a minimum of 6 weeks and take place between 1 October and 31 January in the determination year. This means that schools are consulted in the autumn term each year for admissions nearly two years later. The process is, therefore, based to some degree on schools’ best estimates of the numbers of requests for places informed by the local authority’s forecasting model, which takes into account the patterns of parental preference over the years. Since the Council is the only body that may determine the matter, it falls to the Council in February each year.
- 2.3 The Education (Relevant Areas for Consultation on Admission Arrangements) Regulations 1999 (SI 1999 No. 124) require local authorities to determine relevant areas for consultation on admission arrangements. The relevant areas for schools maintained by North Yorkshire County Council are as follows:
- 2.4 For Community and Voluntary Controlled Schools, the relevant area for consultation is the entire County of North Yorkshire, plus the City of York and the area of Bradford Metropolitan Authority served at secondary level by South Craven School.

For Voluntary Aided, Foundation, Trust Schools and Academies the relevant area for consultation is North Yorkshire County Council and admission authorities within a radius of 3 miles of the school, including admission authorities in neighbouring local authority areas. It is proposed that relevant areas for consultation remain unchanged.

- 2.5 It is proposed that catchment areas for all Community and Voluntary Controlled Schools in North Yorkshire remain unchanged.
- 2.6 Consultation has taken place with the headteachers and governors of 3 Nursery Schools, 305 Primary schools (106 Community, 95 Voluntary Controlled (VC), 36 Voluntary Aided (VA), 58 Converter Academy Schools, 10 Sponsored Academy schools and 1 Foundation Trust). We also consulted 43 Secondary schools (20 are Community, 1 Voluntary Controlled (VC), 5 Voluntary Aided (VA), 13 Converter Academy Schools 4 Sponsored Academy Schools and 2 Foundation Trust/Free), parents and other groups in the local area, the 13 neighbouring authorities and also with the relevant diocesan authorities. The consultation took place between 15 October and 07 December 2018 and was published on the NYCC website; all schools are asked to display a poster promoting the consultation and providing a link to the consultation and giving details of how to obtain a hard copy of the consultation documents. We also undertook a Facebook campaign together with a number of 'tweets' with the aim of promoting the consultation more widely to raise awareness and give people an opportunity to engage.
- 2.7 At the closing date of 7 December 2018 a total of 115 responses (all of which were from schools) had been submitted.
- 2.7.2 A hard copy of all responses to the consultation will be available for Members to view on the morning of the meeting. Schools were asked to express their agreement or otherwise with the proposals relating to their own proposed Published Admission Number (PAN), the proposed admissions policy for Community and Voluntary Controlled schools, the proposed admissions policy for Nursery schools and classes, pre-reception classes and pre-schools under school governance and the proposed In-Year Fair Access Protocol. In addition they had the opportunity to make any other comments. Not all school respondents commented on every proposal within the consultation.
- 2.7.3 As in previous consultations we have again found that many consultees simply respond to the agree/disagree questions. In an effort to encourage greater interaction with the wider range of consultees all other respondents were asked to put forward comments on any aspect of the consultation. The Local Authority received no comments.
- 2.8 There are three key areas to the consultation, details of which are set out below.
- 3.0 Admissions Policy**
- 3.1 Admissions policy (criteria for determining admissions where schools are oversubscribed):
- 3.2 The proposed admission policy for community and voluntary controlled schools, and the proposed policy for nursery schools and schools with nursery and pre-reception classes remain broadly unchanged from 2019/20 arrangements, however for consideration include the addition of children previously in care outside of England. Please see Appendices 1 and 2 respectively.
- 3.3 All local authorities and own admission authorities have been written to by the Rt Hon Nick Gibb MP, Minister of State for School Standards on 4 December 2017. The Minister Confirms that children in care are amongst the most vulnerable in our society. Admission authorities have, since 2007, been required to give looked after children the highest priority in their admissions arrangements. In February 2012 priority was extended to previously looked after children. The minister has confirmed that they

intend to make further changes to the Admissions Code (Currently dated 2014) to include children who were previously in care outside of England. Admission authorities are being encouraged to use their discretion and give these children second highest priority in our oversubscription criteria.

3.4 Responses to the proposed Admission Policy to Community and Voluntary Controlled Schools

The closing date of this consultation was 7 December 2018.

A total of 115 schools responded. No comments were received regarding the proposed policy.

3.5 Responses to the proposed Admission Policy for Nursery Schools, Schools with Nursery and Pre-Reception classes

A total of 115 schools responded. No comments were received regarding the proposed policy.

4.0 Admission Limits

4.1 The proposed Published Admission Numbers (PAN's) for 2020/21 are attached at appendices 4 and 5. The County Council sets the admission limits of Community and Voluntary Controlled schools in consultation with the governing body of the school.

4.2 An own admission authority school (Voluntary Aided, Foundation, Trust Schools, Academies or Free Schools) is not required to include a proposal to increase or keep the same admission number in any consultation on admission arrangements. Conversely all admission authorities must consult if they propose a decrease in PAN. As the admission authority for a community or voluntary controlled school the local authority **must** consult the governing body of each school whether it proposes to increase, decrease or keep the same admission number. Community and Voluntary Controlled schools have the right to object to the Schools Adjudicator if the PAN set for them is lower than they would wish.

4.3 The Authority has consulted with the governing bodies of all community and voluntary controlled schools as part of this annual consultation process. Agreements have been reached with the majority of schools.

4.4 Comments were received from the governing body of 1 Community Primary School. The Governing Body requested their PAN be reduced. A separate response has been forwarded confirming the reasons behind the increased PAN and the requirement for that PAN to remain extant.

4.4.1 The local authority is responsible for school place planning across the whole of the county and must ensure that there are sufficient school places for every child of statutory school age. This means that schools cannot be considered in isolation and the wider impact of any reduction in admission numbers must be taken into consideration. Following this request it is proposed to agree to the reduction in the PAN.

5.0 Co-ordinated Admission Arrangements

5.1 All admission authorities must participate in co-ordination and provide the local authority with the information it needs to co-ordinate admissions for the normal admission rounds by the dates agreed within the scheme. There is no longer a mandatory requirement that local authorities undertake in year co-ordination on behalf of all schools within their area and in liaison with their neighbouring LA's. This does not mean that local authorities cannot propose to continue to do so within their own local area. The Co-ordinated Admission Arrangements Scheme (Appendix 3) proposes the retention of in year co-ordination of admissions by the local authority. As the number of own admission authority schools increases parents may find it increasingly difficult to navigate a system which is fragmented in terms of numbers of admission authorities, proliferation of different admissions criteria and a lack of clarity about where accountability sits for securing their rights.

5.2 It is proposed that within North Yorkshire the local authority will continue to co-ordinate in-year admissions for all community and voluntary controlled schools. In order for the scheme to operate effectively across all schools, including own admission authority schools, it is proposed that the local authority will also continue to co-ordinate in-year admissions on behalf of the governing bodies of own admission authority schools which elect to be party to the scheme. It is considered that as the admission authority for community and voluntary controlled schools the local authority should retain responsibility for in year co-ordination within these schools and in the interests of parents and children it is proposed to continue to deal with in year admissions for all own admission authority schools which request us to do so. If an academy trust would like the local authority to undertake this function on their behalf this can be managed as a chargeable service.

5.2.1 The School Admissions Code states that 'local authorities must, on request, provide information to a parent about the places still available in all schools within its area. Any parent can apply for a place for their child at any time to any school outside the normal admission round.

5.2.2 Own admission authority schools must, on receipt of an in-year application, notify the local authority of both the application and its outcome, to allow the local authority to keep up to date figures on the availability of places in the area.

5.3 115 school respondents made no comment in respect of the proposed arrangements. No responses have been received from any of North Yorkshires neighbouring LA's.

6.0 Selection Update – Changes to the Selective Testing Process

6.1 The current selection testing scheme operated by the Local Authority to determine eligibility for grammar school education at Ripon Grammar School (RGS) and Ermysted's Grammar School (EGS) has been used for 3 years. Following the change to the selection scheme and as part of the Council's 2020 change programme we are undertaking a review of the current selection testing process.

6.2 North Yorkshire originally consulted on proposed changes to the North Yorkshire Selective Testing Scheme between 17 November 2014 and 16 January 2015 (as part of the normal admission arrangements consultation).

- 6.3 At the time of consulting we proposed changes to a testing scheme that had been in existence since 2000. It was considered at that time that the cost of administering an overly bureaucratic system of testing was no longer sustainable.
- 6.4 The original proposal was to move to a system of one day testing (this would be a single Saturday in September). The selection test would comprise of one verbal reasoning (VR) and one non-verbal reason (NVR) paper. There would be no familiarisation test but in order to ensure that all children have the opportunity to familiarise themselves with the type of questions that would be used we would provide sample test booklets on the North Yorkshire Web Site which are provided by GLA at a cost to the authority. All pupils would sit the test on the same day in a central venue. This would create a level playing field for all children. In the interest of cost and efficiency it was proposed that the central venue for each area would be the local grammar school. The local authority would continue to administer the testing process.
- 6.5 It was also proposed at this time that the practice of carrying out selection reviews be discontinued. These were offered to families whose children had not achieved the appropriate “cut off” mark.
- 6.6 This review was non-statutory, and all parents continued to have the statutory right to an admission appeal following the allocation of school places.
- 6.7 Following the consultation, and in particular strong representation from both governing bodies, the proposal was amended to accommodate the request to continue testing pupils with two actual tests. This resulted in the tests being administered over two Saturdays in September.
- 6.8 We have a legal requirement to complete the procurement process in respect of the selective testing material. This along with the desire and need to make sufficient changes to the scheme that would result in budgetary savings has resulted in further discussions with both of our selective schools during the second half of 2018.
- 6.9 **What changes have been agreed?**
- 6.10 As previously stated, one of the main drivers is the need to go through the procurement process of the testing material and in line with the 2020 vision reducing the budgetary and administrative burden on the authority.
- 6.11 We have therefore agreed to reduce the testing process to one day with effect from September 2019. The subsequent reduction in time, staffing and costs in carrying out the selection scheme will produce a significant reduction in our current costs. As the time scale is short the LA will fund the testing process for both schools for testing in September 2019 (Entry into school September 2020).
- 6.12 This will allow further discussion and enable the schools to address the implications of administering the test and in respect of EGS being charged by the LA for the testing materials.

7.0 General Comments

- 7.1 All schools were given the opportunity to submit any general comments in relation to the consultation, the majority of schools did not do so. As noted above a hard copy of all responses which will be available for Members to view on the morning of the meeting.

8.0 Legal Implications

- 8.1 The consultation on proposed admissions arrangements for 2020/21 is in accordance with the requirements of the School Admissions Code 2014 and associated legislation. Failure to comply with admission arrangements as determined can lead to challenge by way of objections to the Schools Adjudicator or complaints to the Local Government Ombudsman.

9.0 Recommendations

- 9.1 That the proposed Admission Arrangements be recommended to the County Council for approval on 20 February 2019 these include:
- i) the proposed admission policy for community and voluntary controlled schools; and
 - ii) the proposed admissions policy for nursery schools, schools with nursery and Pre-reception classes, appendices 1 & 2.
 - the proposed co-ordinated admission arrangements appendix 3
 - the proposed In Year Fair Access Protocol appendix 3a
 - the proposed published admission numbers (PAN's) for community and voluntary controlled schools as show in appendices 4 (Primary) and 5 (Secondary)

Stuart Carlton
Corporate Director – Children and Young People's Service

COUNTY HALL
NORTHALLERTON
January 2019

Author of report – William Burchill Admissions and Transport Manager

School Admissions Code 2014

The Education (Relevant Areas for Consultation on Admission Arrangements) Regulations 1999 (SI 1999 No. 124)

Appendix 1 - proposed admission policy for community and voluntary controlled schools

Appendix 2 - proposed admission policy for nursery schools, schools with nursery classes, pre-reception classes and school run pre-schools under school governance

Appendix 3 - proposed co-ordinated admission arrangements scheme

Appendix 4 - proposed In Year Fair Access Protocol

Appendix 5 - proposed PAN's – primary

Appendix 6 - proposed PAN's – secondary

ADMISSIONS POLICY FOR COMMUNITY AND VOLUNTARY CONTROLLED SCHOOLS FOR THE SCHOOL YEAR 2020/21

All governing bodies are required by section 324 of the Education Act 1996 to admit to the school a child with an Educational Health and Care Plan (EHCP) that names the school. This is not an oversubscription criterion. This relates only to children who have undergone statutory assessment and for whom a final Educational Health and Care Plan has been issued.

If the number of applications exceeds the Published Admission Number (PAN), after the admission of children where the school is named in the Education Health and Care Plan the following oversubscription criteria will apply:

| ORDER OF PRIORITY: | Notes: |
|---|--|
| <p><u>Priority Group 1:</u></p> <p>Looked after children and all previously looked after children for whom the school has been expressed as a preference. Previously looked after children are children who were looked after, but ceased to be so because they were adopted¹ or became subject to a child arrangement order² or special guardianship order.</p> | <p><i>This applies to all looked-after children, including those who are in the care of another local authority or being provided with accommodation by a local authority in the exercise of their social services function at the time of making an application.</i></p> <p><i>In the case of previously looked after children, a copy of the relevant documentation will be required in support of the application.</i></p> <p>¹<i>This includes children who were adopted under the Adoption Act 1976 and Children who were adopted under the Adopted & Childrens Act 2002.</i></p> <p>²<i>Child Arrangement Orders replace residence orders and any residence order in force prior to 22 April 2014 is deemed to be a Child Arrangement Order.</i></p> |
| <p><u>Priority Group 2 :</u></p> <p>Children who appear to the Admissions Authority to have been in state care outside of England and cease to be in state care as a result of being adopted.</p> | <p><i>A child is regarded as being in state care outside of England if they were accommodated by a public authority, a religious organisation or any another provider of care whose sole purpose is to benefit society.</i></p> |
| <p><u>Priority Group 3:</u></p> <p>Children the Authority considers have special social or medical reasons for admission.</p> | <p><i>We will only consider applications on social or medical grounds if they are supported by a professional recommendation from a doctor, social worker, or other appropriate professional. The supporting evidence should set out the particular social or medical reason(s) why the school in question is the most suitable school and the difficulties that would be caused if the child had to attend another school.</i></p> <p><i>Panels of professionally qualified people will consider all applications made under priority group 2.</i></p> |
| <p><u>Priority Group 4 :</u></p> <p>Children living within the normal area of the school.</p> | |
| <p><u>Priority Group 5:</u></p> <p>Children living outside the normal area of the school.</p> | |

Children in higher numbered priority groups will be offered places ahead of those in lower numbered priority groups. All applications within each priority group will be considered equally (i.e. all applications, regardless of order of preference).

Tie break:

If there are not enough places for all the children in one of these priority groups, we will give priority first to those with a sibling at the school in September 2020 (in all cases sibling refers to brother or sister, half

brother or sister, adopted brother or sister, step brother or sister, or the child of the parent / carer's partner where the child for whom the school place is sought is living in the same family unit at the same address as that sibling) and then to those living nearest the school.

If within a priority group there are not enough places for all those with a sibling at the school in September 2020, we will give priority to those children with a sibling living nearest the school.

All distance measurements are based on the nearest route recognised by the County Councils electronic mapping system from a child's home address to school. The measurement is made from a fixed point within the dwelling, as identified by Ordnance Survey, to the nearest school entrance using footpaths and roads. The routes measured to determine the allocation of school places will be those recognised by the electronic mapping system used by the school admissions team.

If the distance tie-break is not sufficient to distinguish between applicants in a particular priority group a random allocation will be used.

RANDOM ALLOCATION PROCEDURE

Random allocations are necessary where:

1. There is more than one applicant ranked equally according to the published admission rules and there are insufficient places available to allocate all of the equally ranked applicants
2. This occurs where applicants are equidistant from a school because the usual method of measuring distance to the school results in two unrelated applicants having the same distance measurement. Each random allocation event only holds for the allocation of the currently available school place. On any waiting list the remaining applicants remain equally ranked and any further place is offered as the result of a further random exercise. In making a random allocation it is important that there is scrutiny from a person who is not involved in the allocation process.

DEFINITION OF ROLES

Independent Scrutineer (IS) – this is a person who ensures the process is carried out in a correct and transparent way. The IS must be independent of the school for which the allocation is to be made and also must be independent of the Council's Admissions and Transport team.

Admissions Officer (AO) – this is an officer from the Council's Admissions and Transport team who is responsible for carrying out the administration of the random allocation procedure and recording the results, under the scrutiny of the IS.

Person who makes the draw (P) – this must be a person independent of the school for which the allocation is to be made and must be a person who is not part of the Council's Admissions and Transport team.

PROCESS TO BE FOLLOWED – N.B. This entire process is to be carried out in sight of, and under the scrutiny of, the IS

1. The AO allocates each pupil to be included in the draw a number and records it on the 'Random Allocation Cross Reference Sheet'. This is placed in a sealed envelope.
2. The AO prepares as many equal sized pieces of white paper as are necessary, which are numbered consecutively.
3. The AO folds each numbered sheet and seals them in identical envelopes, i.e. envelopes with no visibly identifiable differences.
4. The AO shuffles the envelopes and hands them to P who shuffles the envelopes again, picks one envelope and opens it.
5. The AO records the first number drawn on the 'Random Allocation Record sheet'.
6. If more than one place can be offered they continue to draw envelopes and record numbers until all of the available places are allocated.
7. The AO then opens the previously sealed envelope containing the 'Random Allocation cross reference sheet' and records the numbers drawn on the 'Random Allocation cross reference sheet', marking clearly which child(ren) has(have) been allocated a place and which have not.
8. Once the process has been completed, the AO, IS and P should sign and date both the 'Random Allocation Record sheet' and the 'Random Allocation cross reference sheet' in order to certify that the procedure has been carried out correctly.

We may be able to meet your preference for a place at a school that does not serve the local area you live in. In this case, you will normally be responsible for travel arrangements and the costs of your child's travel to and from school.

LOCAL ARRANGEMENTS:

Scarborough area - Graham School - For priority group 3 applications (that is, children living within the normal area covering the school), priority will be given as follows:

- a) Children living in the area normally served by East Ayton Community Primary School and the area west of Scalby Road from Lady Edith's Drive to Scalby Beck.
- b) Children who will have an older sibling at the school of their choice.
- c) Children who live nearest to the school of their choice.

Scalby School - For priority group 5 applications (that is, children living outside the normal area of the school), priority will be given to children who live in the areas normally served by East Ayton Community Primary School and the area west of Scalby Road from Lady Edith's Drive to Scalby Beck and who:

- a) will have an older sibling at Scalby School at the start of the term when the younger sibling starts school;
or
- b) would have to make the longest journey to another school without them becoming eligible for help with travel costs from us under the local authority transport policy.

Selby area - Brayton High School and Selby High School – For the purposes of admissions for priority group 3 children a distinction is drawn between those who live in Selby rural area and Selby town area. Each school, Brayton High and Selby High, has its own designated rural area and the two schools are jointly the normal schools for the Selby town area. Places will be offered, within priority group 3, to children from the individual rural area associated with each school before those in the town area, using the tie break elements of the Admissions policy for community and voluntary controlled schools for the school year 2018/19 where necessary.

Ripon Grammar School - Ripon Grammar School is a designated grammar school,¹ this means that the school is permitted to select its entire intake on the basis of high academic ability². The school does not have to fill all of its places if applicants have not reached the required standard. Ripon Grammar School offers 103 day places and 14 boarding places.

As a maintained boarding school Ripon Grammar School may take boarders as well as day pupils. Maintained boarding schools can set separate admission numbers for day places and boarding places. A maintained boarding school can interview applicants to assess suitability for boarding, but such interviews **must** only consider whether a child presents a serious health and safety hazard to other boarders or whether they would be able to cope with and benefit from a boarding environment. To help with this assessment, they may also use a supplementary information form, and information provided by the previous school and by the child's home local authority (on safeguarding issues).

Boarding schools **must** give priority in their oversubscription criteria in the following order:

- a. looked after children and previously looked after children;
- b. children of members of the UK Armed Forces who qualify for Ministry of Defence financial assistance with the cost of boarding school fees;
- c. children with a 'boarding need', defined by Ripon Grammar School as follows:
 - i. Children at risk or with an unstable home environment and children of service personnel who have died while serving or who have been discharged as a result of attributable injury; or
 - ii. Children of key workers and Crown Servants working abroad, e.g. the children of charity workers, people working for voluntary service organisations, the diplomatic service or the European Union, teachers, law enforcement officers and medical staff working abroad whose work dictates that they spend much of the year overseas.

¹ As designated by the Education (Grammar School Designation) Order 1998 (SI 1998/2219). Where a designated Grammar School converts to become an Academy, the Academy is permitted to continue selecting their entire intake: Section 6(3) of the Academies Act 2010.

² Section 104 of the School Standards and Framework Act

DEFERRED APPLICATIONS FOR INFANTS

Admission authorities **must** provide for the admission of all children in the September following their fourth birthday.

Parents offered a place in reception for their child have a right to defer the date their child is admitted, or to take the place up part-time, until the child reaches compulsory school age. Places cannot be deferred beyond the beginning of the final term of the school year for which the offer was made.

Children reach compulsory school age on the prescribed day following their 5th birthday (or on their fifth birthday if it falls on a prescribed day). The prescribed days are 31 August, 31 December and 31 March.

SUMMER BORN CHILDREN

Children born in the summer term are not required to start school until a full year after the point at which they could first have been admitted – the point at which other children in their age range are beginning year 1. As noted above, school admission authorities are required to provide for the admission of all children in the September following their fourth birthday, but flexibilities exist for children whose parents do not feel they are ready to begin school at this point.

If you feel that your summer born child is not ready to start school in the September following his/her fourth birthday, you should still submit your application for your child's normal age group at the usual time and at the same time submit a request for admission out of the normal age group directly to the local authority. You will be advised of the outcome of your request for delayed entry prior to the primary national offer date of 15 April 2019.

The DfE has issued non-statutory guidance, "Advice on the Admission of summer born children", which can be accessed via <https://www.gov.uk/government/publications/summer-born-children-admission>

The DfE guidance states that:

- 'It is reasonable for admission authorities to expect parents to provide them with information in support of their request – since without it they are unlikely to be able to make a decision on the basis of the circumstances of the case. This should demonstrate why it would be in the child's interests to be admitted to reception rather than year one.
- In some cases parents may have professional evidence that it would be appropriate for them to submit, for example, when a child receives support from a speech and language therapist. However, there should be no expectation that parents will obtain professional evidence that they do not already have. Admission authorities must still consider requests that are not accompanied by professional evidence. In such cases the supporting information might simply be the parent's statement as to why they have made their request.'

If your request is agreed, your application for the normal age group may be withdrawn before a place is offered. If your request is refused, you must decide whether to accept the offer of a place for the normal age group, or to refuse it and make an in year application for admission to year one for the September following your child's fifth birthday.

Where your request is agreed, you must make a new application as part of the main admissions round the following year.

ADMISSION OF CHILDREN OUTSIDE THEIR NORMAL AGE GROUP

The School Admission Code states that 'Parents may seek a place for their child outside of their normal age group, for example, if the child is gifted and talented or has experienced problems such as ill health. In addition, the parents of a summer born child may choose not to send that child to school until the September following their fifth birthday and may request that they are admitted out of their normal age group – to reception rather than year 1.'

When such a request is made, the local authority will make a decision on the basis of the circumstances of the case and in the best interests of the child concerned, taking into account the views of the headteacher and any supporting evidence provided by the parent. This will include taking account of the parent's views; information about the child's academic, social and emotional development; where relevant, their medical history and the views of a medical professional; whether they have previously been educated out of their normal age group; and whether they may naturally have fallen into a lower age group if it were not for being born prematurely. The local authority will notify parents in writing of the outcome of their request setting out the reasons for their decision. Parents have a statutory right to appeal against the refusal of a place at a school for which they have applied. This right does not apply if they are offered a place at the school but it is not in their preferred age group.

**ADMISSIONS POLICY FOR COMMUNITY AND VOLUNTARY CONTROLLED
NURSERY SCHOOLS, NURSERY CLASSES, PRE-RECEPTION CLASSES AND SCHOOL
RUN PRE SCHOOLS UNDER SCHOOL GOVERNANCE
FOR THE SCHOOL YEAR 2020/21**

All governing bodies are required to admit to the school a child with an Educational Health & Care Plan (EHCP) that names the school. This is not an oversubscription criterion. This relates only to children who have undergone statutory assessment and for whom a final Education Health & Care Plan has been issued.

Where the number of applications exceeds the number of places the Governing Body will use the following oversubscription criteria to prioritise applications.

| ORDER OF PRIORITY: | <i>Notes</i> |
|--|--|
| <p><u>First Priority</u></p> <p>Looked after children and all previously looked after children for whom the school has been expressed as a preference. Previously looked after children are children who were looked after, but ceased to be so because they were adopted¹ or became subject to a child arrangement order² or special guardianship order.</p> | <p><i>This applies to all looked-after children, including those who are in the care of another local authority or being provided with accommodation by a local authority in the exercise of their social services function at the time of making an application.</i></p> <p><i>In the case of previously looked after children, a copy of the relevant documentation will be required in support of the application.</i></p> <p>¹<i>This includes children who were adopted under the Adoption Act 1976 and Children who were adopted under the Adopted & Childrens Act 2002.</i></p> <p>²<i>Child Arrangement Orders replace residence orders and any residence order in force prior to 22 April 2014 is deemed to be a Child Arrangement Order.</i></p> |
| <p><u>Second Priority</u></p> <p>Children who appear to the Admissions Authority to have been in state care outside of England and cease to be in state care as a result of being adopted.</p> | <p><i>A child is regarded as being in state care outside of England if they were accommodated by a public authority, a religious organisation or any another provider of care whose sole purpose is to benefit society.</i></p> |
| <p><u>Third Priority</u></p> <p>Children who are recommended by the Director of Children and Young Peoples Service, including children in the care of a local authority, or by the appropriate designated medical officer.</p> | <p><i>Note: we will only consider applications in this category if they are supported by a recommendation from a doctor, social worker or other appropriate professional which sets out the particular reason(s) why the school in question is the most suitable school and the difficulties that would be caused if the child had to attend another school.</i></p> |
| <p><u>Fourth Priority</u></p> <p>Children from homes with poor housing conditions or overcrowding, or from a background which could affect the child's normal educational development.</p> | <p><i>Note: this should be supported by the recommendation of a doctor, social worker or other appropriate professional.</i></p> |
| <p><u>Fifth Priority</u></p> <p>Children within the normal area of the school, giving priority to the oldest children first.</p> | |
| <p><u>Sixth Priority</u></p> <p>Children from outside the school's normal area, giving priority to those whose home is nearest to school first.</p> | |



2020/21
CO-ORDINATED ADMISSION
ARRANGEMENTS

Introduction

The aim of the North Yorkshire Coordinated Primary and Secondary School Admissions Scheme is to provide an open and fair way for considering parental preferences for admission to schools. Our scheme complies with current legislation relating to school admissions and with advice contained in the Department for Education 2014 School Admissions Code.

The scheme is reviewed annually and is designed to ensure that every child living in North Yorkshire, who is due to start at a North Yorkshire primary school, or transfer to junior or secondary school, is offered a single school place on the same day. It aims to ensure that each parental preference is considered equally and parents receive a school place in accordance with their highest ranked preference which is available. This scheme applies to admissions in the normal round but not those that take place in-year. In-year admissions are those made during the school year and applications for admission to age groups other than the normal year of entry.

North Yorkshire Local Authority (LA) will work with Community, Voluntary Controlled, Voluntary Aided, Foundation, Trust primary and secondary schools and Academies including Free Schools within North Yorkshire, to ensure the co-ordinated scheme operates as smoothly as possible for parents and we will work closely with our thirteen neighbouring authorities to ensure admission arrangements are co-ordinated. Our 13 neighbouring admission authorities, Voluntary Aided, Foundation, Trust schools and Academies are listed at Appendix 3 and Appendix 4.

After consideration of all parental preferences for all schools with reference to the order in which these are ranked, the LA will notify parents living within North Yorkshire of the offer of one school place on behalf of all admission authorities operating within the co-ordinated admissions scheme.

The detailed arrangements and timetable for co-ordinating school admission with the separate arrangements for secondary and primary schools can be found at Appendices 1 and 2.

Arrangements for In Year admissions can be found at page 18 of this co-ordination document. This document is also available on our website at www.northyorks.gov.uk/admissions

The website includes information about:

- The operation of our admissions schemes for all North Yorkshire Community and Voluntary Controlled schools;
- The timescales and timetable for each admission process;
- The number of allocations made at each school in the previous school year;
- The number of schools that were oversubscribed resulting in parental appeals and the numbers and outcome of these appeals. This information about allocations and appeals should help parents to assess realistically their likelihood of obtaining a place at their preferred schools.

Co-ordination

1. The scheme does not affect the duty of the governing bodies of Academies including Free Schools, Voluntary Aided, Foundation and Trust schools to determine their own admissions policies.
2. We will receive information of children expressing preferences for our Community, Voluntary Controlled, Voluntary Aided, Foundation and Trust Schools and Academies including Free Schools from neighbouring LAs, which we will process as part of our co-ordinated arrangements along with those for North Yorkshire children.
3. Parents requesting literature on Voluntary Aided, Foundation, Trust schools or Academies including Free Schools or non-North Yorkshire schools will be referred to the appropriate school or admissions authority. Where non-North Yorkshire parents complete our form in error we will forward it to their home authority.
4. We will receive complete ranked lists of all preferences from North Yorkshire Voluntary Aided, Foundation, Trust schools and Academies including Free Schools as well as lists from neighbouring Local Authorities of children to whom they can offer places. We will produce lists of children to whom we can offer places at our Community and Voluntary Controlled Schools. We will inform our neighbouring LAs which of their children can and cannot be offered places at any of our schools.
5. Having received information from other admissions authorities we will allocate places to children living in our area according to the highest ranked preference for which a place is available.
6. Where we cannot meet any of the parental preferences expressed for a North Yorkshire child we will allocate a place at an alternative school with places available after all those preferencing the school have first been allocated a place. This may or may not be the local school and may be some distance from their home.
7. Supplementary Information Forms may need to be completed by parents applying for Voluntary Aided primary or secondary schools or Academies including Free Schools.

Admissions Co-ordination 2020/21

The number of schools as at October 2018

Secondary

North Yorkshire's co-ordinated admissions scheme applies to 5 Voluntary Aided Secondary Schools, 19 Community Secondary schools, 17 Academies, 1 Free School UTC and 1 Trust Secondary School.

Primary

1 Foundation Primary, 67 Academy, 36 Voluntary Aided Primary Schools and 201 Voluntary Controlled and Community Primary Schools.

We co-ordinate with 4 Diocesan Authorities and 13 Neighbouring Authorities.

On line applications for school places can be made by logging on to our website at www.northyorks.gov.uk/primaryadmissions or www.northyorks.gov.uk/secondaryadmissions.

Applying for a Primary, Infant, Junior or Secondary School Place

8. Parents can list up to 5 schools in order of preference. Parents should consider including their local school as one of their preferences because if we are unable to meet a higher preference and their normal area school is oversubscribed, we will give children a place at the nearest school with places available which may be some distance from their home.
9. If parents name a school other than their catchment area school, they will be responsible for transport under the terms of the Home to School Transport Policy.

Late Applications

10. Any Common Application Form for school places received after the closing date of 31 October 2019 for secondary schools and 15 January 2020 for primary schools will be considered as a late application unless a reason has been provided that is acceptable to us as the admission authority. Late applications whose reasons have been agreed will be considered along with applications received on time.
11. Applications received on or after 2 March 2020 for secondary schools or 16 April 2020 for primary schools will be co-ordinated using the same arrangements and criteria as previous applications. The offer of a school place will be made in accordance with our agreed and published scheme. However applications received after the first day of the school year will be considered as in-year applications.
12. No changes can be made to applications for secondary schools after the 24 January 2020 and to primary applications after 6 March 2020. This includes any changes of address. Any applications received after these dates will only be processed after the allocations dates i.e. 2 March 2020 for secondary applications and the 16 April 2020 for primary applications.

The Offer of a Place

13. No places will be held in reserve for any school.
14. We will contact all parents of North Yorkshire children on 2 March 2020 for Secondary Schools and on the 16 April 2020 for Primary, Infant and Junior Schools, notifying them of the single school place allocated to their child or children.
15. The place offered could be at one of our Community or Voluntary Controlled schools, Voluntary Aided, Foundation, Trust schools or Academies including Free Schools within North Yorkshire or a school in an area served by another LA.

Appeals

16. Where we have been unable to offer a school place listed as a higher preference, parents will be offered the statutory right of appeal against the decision.
17. In such circumstances the offer letter or email will give the reasons why we have been unable to allocate their other stated preferences. Where the statutory right of appeal is the responsibility of North Yorkshire LA we will inform the parents where the appeal forms can be located on the NYCC website.
18. Where the responsibility is that of another admissions authority, we will advise parents to contact them to confirm appeal arrangements.
19. Where the LA has multiple appeals for one school these will be grouped appeals unless the authority decides that this would not be appropriate.
20. Parents who have been refused a place at a North Yorkshire school by their home authority will be informed that they should contact us to discuss the appeals process.
21. The outcome of successful admission appeals will lead to further modifications to the original allocation. These changes must again be communicated to other admission authorities (and theirs to us) to enable all authorities to make final adjustments to the allocation.
22. Once appeals have been completed we will communicate with all the schools within our boundary to ensure that they have a correct and up-to-date allocation list.

Waiting Lists

23. A waiting list will be maintained for all oversubscribed Community, Voluntary Controlled, Voluntary Aided, Foundation, Trust Schools and Academies including Free Schools until 31 December 2020. Each child added will require the list to be ranked again in line with the published oversubscription criteria.
24. The LA requires the governing body of Voluntary Aided, Foundation, Trust School and Academies including Free Schools to update us when places become available unless

the LA are maintaining the schools waiting list on their behalf. The co-ordination regulations require that any offer of a school place must always be made by the LA.

25. Where places become available they will be allocated from the waiting list in accordance with the published oversubscription criteria. The school admissions team will offer the place to the child at the top of the waiting list. Parents will have five working days to reply before the place is offered to another child. If North Yorkshire Council, after using all advised contact details, is unable to contact a successful applicant to offer a place, the available place will be offered to the next child who qualifies for that place from the waiting list. The authority will confirm, in writing, that your child has been removed from the waiting list. Should you wish for your child (ren) to be placed back on the waiting list you would need to notify the LA in writing. It is the applicant's responsibility to keep the authority informed of updated contact and address details.
26. If you change address whilst your child is on a waiting list, you need to send evidence of your new address. If your new address affects your child's position(s) on any waiting list(s), then they will be changed accordingly.
27. Where we are able to offer a place to a non-North Yorkshire child from the waiting list we will liaise with their home authority.

Secondary Transfer Scheme 2020/21

28. The secondary scheme enables parents living within North Yorkshire whose children are transferring to secondary school to complete a single application either on-line or in paper form.
29. The parents of Year 6 children who will be Year 7 in September 2020 will be informed by letter via their child's primary school that they will need to apply on-line for a school place. They can express up to 5 preferences for admission to any Community, Voluntary Controlled, Voluntary Aided, Foundation, Trust schools and Academies including Free Schools both within North Yorkshire and neighbouring LA area, giving reasons for their preferences where appropriate.
30. Parents without internet access will be informed that they will need to contact the admissions team for a paper copy of the common application form to enable them to apply for a school place for their child.
31. Parents will be informed that supplementary information may also be requested by Voluntary Aided, Academies including Free Schools or non-North Yorkshire schools, in order for the school to apply their oversubscription criteria.
32. Common application forms will be required for all transfers at Year 7. Applications for any other year group, apart from the normal year of entry (Year 7) will be dealt with as in-year applications.
33. Parents must return their applications by the closing date of 31 October 2019.

34. Parents will not be allowed to change their preferences after 31 October 2019 without a reason that is acceptable to the admission authority.
35. Parents who wish their children to attend independent schools will be encouraged to tell us. Independent schools are not included in the co-ordinated arrangements. These parents may also wish to apply for a place at a North Yorkshire school.
36. If parents living outside of North Yorkshire enquire about our schools they will be directed to the North Yorkshire County Council website. Parents will be advised to complete a common application form for their home authority.
37. On the common application form parents will need to provide their child's name and residential address. The address provided must be where the child lives permanently. If residency is split, the address provided should be the place where the child lives for the majority of the school week (Monday to Friday). Confirmation and agreement in writing by both parents will be required.
38. The offer of a single school place will be made on 2 March 2020 and allocation emails will be sent on that date. For those who have completed a paper application or requested a letter, letters will be sent on that date by second class post.
39. We will offer a place at a North Yorkshire school even if parents have not completed a common application form because we have a duty to ensure a school place is available for every North Yorkshire child.
40. Parents who do not wish to accept a place at a school offered to them must notify the admission authority as soon as possible in writing advising the LA of the alternative provision that is being made. Without this information the place will remain allocated.
41. The timetable for secondary school admissions is attached at Appendix 1 of the Co-ordinated Admissions Arrangements, Secondary Transfer 2020/21.

Selection

42. There are 3 selective grammar schools within North Yorkshire; a Voluntary Aided boys' school, a mixed co-educational school and a girls' school which has Academy Trust status.
43. If a child is entered for selection testing, parents must make sure that they name the selective school they would like them to attend on the common application form.

Skipton Selection

44. Places will normally be provided at Ermysted's Grammar School for boys who are deemed suitable for a grammar school education in accordance with the LA's selection scheme and who live in the area served by the primary schools in Beamsley, Bradley, Burnsall, Carleton, Cracoe, Embsay, Gargrave, Grassington, Kettlewell, Kirkby-in-Malhamdale, Skipton, Thornton-in-Craven and Threshfield. Ermysted's Grammar School is a selective grammar school that offers education to boys aged 11 to 18. Children can only be admitted to Ermysted's Grammar School if they have been deemed suitable for a grammar school education. The LA administers the published selection scheme for boys in the Skipton area.
45. All boys living and attending schools within the area served by Ermysted's Grammar School will be invited to sit the selection tests. Parents will be required to return a reply slip.
46. The governing bodies of Ermysted's Grammar School (Voluntary Aided) and Skipton Girls' High School (Academy Trust) are responsible for applying their own admissions policies and the LA applies its published co-ordinated admissions arrangements on behalf of these schools.
47. Skipton Girls' High School is a selective grammar school that offers education to girls aged 11 to 18 who are deemed suitable for a grammar school education in accordance with their selection scheme.
48. The Skipton Academy is a non-selective Academy and Upper Wharfedale School is a non-selective secondary school in a selective area offering education for children aged 11 to 16.

Ripon Selection

49. Places will normally be provided at Outwood Academy Ripon and Ripon Grammar School for children who live in the City of Ripon together with the parishes of Aldfield, Azerley, Bishop Monkton, Bridge Hewick, Burton Leonard, Copt Hewick, Eavestone, Givendale, Grantley, Grewelthorpe, Hutton Conyers, Kirkby Malzeard, Laverton, Lindrick, with Studley Royal and Fountains, Littlethorpe, Markenfield Hall, Markington-with-Wallerthwaite, Newby-with-Mulwith, North Stanley with Sleningfird, Sawley, Sharow, Skelding, Skelton, Studley Roger and Winksley.
50. Outwood Academy Ripon is a non-selective Academy in a selective area offering education for children aged 11 to 18. Ripon Grammar School is a selective grammar school that offers an education for children aged 11 to 18. Children can only be admitted to Ripon Grammar School if they have been deemed suitable for a grammar school education, in accordance with the LA selection scheme. The LA administers both the published selection scheme and the allocation of school places at Ripon Grammar School as it is a community school. The LA will apply its published co-ordinated admission arrangements on behalf of both Outwood Academy Ripon and Ripon Grammar School.
51. All children living and attending schools within the area served by the Ripon schools will be invited to sit the selection tests. Parents will be required to return a reply slip.

Selection tests

52. Tests for all forms of selection must be clear and objective and give an accurate reflection of the child's ability or aptitude, irrespective of sex, race or disability. It is for the admission authority to decide the content of the test, providing that the test is a true test of aptitude or ability.
53. The results of these selection tests are used to identify the highest scoring 28% or as close as possible of Year 6 children who live in the Ripon selective area and the highest scoring 28% or as close as possible of Year 6 boys who live in the Skipton selective area. This procedure sets the cut-off mark in each selective area and sets the standard which children in Ripon and boys in Skipton must reach, to be deemed suitable for grammar school education in their local selective area.
54. For us to consider children who live outside the selective area to be deemed suitable for a grammar school education at Ripon Grammar School or Ermysted's Grammar School, they must reach the cut-off mark which is set by the performance of the children who live in the selective area, as explained above.
55. There is no guarantee that children who reach the cut-off mark in the selection tests will be allocated a place at a grammar school. If the school is oversubscribed with children who are deemed suitable for a grammar school education, places will be allocated using the published oversubscription criteria.
56. The LA ensures that parents are aware that meeting the academic requirements for entry to Ripon Grammar School and Ermysted's Grammar School is not, in itself, a guarantee of a Grammar School place.
57. If a child is refused a place at the school on 2 March 2020, parents will be offered their statutory right of appeal for a place at the school.
58. The School Admissions Code 2014 states that LAs should take all reasonable steps to inform parents of the outcome of selection tests before the closing date for secondary applications on 31st October so as to allow parents time to make an informed decision when selecting their preferences.
59. The LA must ensure that tests are accessible to children with special educational needs and disabilities, having regard to the reasonable adjustments for pupils with a disability required under equalities legislation.

Selection Testing 2020/21

60. Selection testing will take place in September 2019 and the results of selection testing will be sent out to parents on 11 October 2019.
61. Late tests will take place on designated dates during the year. There will be dates set in January for any children moving into the area or for any children where there is a genuine reason that is agreed by the LA. Any other late tests will take place in April, June and August.

Primary Transfer Scheme 2020/21

62. The primary scheme enables parents living within North Yorkshire to complete a single application either on-line or in paper form listing up to five preferences for admission to any primary, infant or junior schools both within North Yorkshire and neighbouring LA areas, giving reasons for their preferences where appropriate.
63. Parents without internet access will be able to contact the LA for a common application form to enable them to apply for a primary school place for their child.
64. If parents list a Voluntary Aided school or Academy including Free Schools as a preference the school may request supplementary information in order for them to apply their oversubscription criteria.
65. Parents must return the common application forms by the deadline of 15 January 2020.
66. Parents will not be allowed to change their preferences after 15 January 2020 without a reason that is acceptable to the admission authority.
67. Parents who wish their children to attend an independent school will be encouraged to tell us. Independent schools are not included in the co-ordinated arrangements. These parents may also wish to apply for a place at a North Yorkshire school.
68. If parents living outside of North Yorkshire enquire about our schools they will be directed to the North Yorkshire County Council website. Parents will be advised to complete a common application form for their home authority.
69. On the common application form parents will need to provide their child's name and residential address. The address provided must be where the child lives permanently. If residency is split between two parents, the address used must be the address where the child lives for the majority of the school week (Monday to Friday). Confirmation and agreement in writing from both parents will be required.
70. For primary school applications, all offers must be made on the 16 April 2020.
71. Parents who do not wish to accept a place at a school offered to them must notify the admission authority as soon as possible in writing advising the LA of the alternative provision that is being made. Without this information the place will remain allocated.
72. Appeals will usually be heard for first admission to schools in June and July of 2020.

Appendix 1

North Yorkshire Local Authority

Secondary, Community, Voluntary Controlled, Aided, Foundation, Trust Schools and Academies Timetable 2020/21

| Date | Activity |
|--|---|
| 28 June 2019 | Closing date for applications to sit the selection tests for children who are not automatically entered for selection. Closing date for withdrawal of children who are automatically entered for selection testing. |
| September 2019 | Parents informed by letter from the LA via child's primary school to apply on-line and details are provided. Parents without internet access to contact the LA for information. |
| September 2019 | Application round to apply for a secondary school place will open. |
| September 2019 | Proposed selection testing date for Skipton and Ripon for all children (to be confirmed) |
| 11 October 2019 | Results of selection testing posted to all parents |
| 31 October 2019 | Closing date for return of secondary Common Application Forms. |
| 14 November 2019 | Neighbouring LAs to send us details of children in their area who have expressed preferences for schools in North Yorkshire. We send details of children expressing preferences for schools in other LA areas to those authorities for consideration. |
| 20 November 2019 | Details of all children who have expressed preferences for North Yorkshire Academies, Voluntary Aided, Foundation and Trust schools sent to the schools for consideration. |
| 13 January 2020 | Information to be returned to us by Voluntary Aided, Foundation and Trust schools on which places they can allocate. |
| 20 January 2020 | First round of allocation information sent to other authorities identifying potential offer(s). |
| 31 January 2020 | Confirmation of allocations with neighbouring admission authorities including Academies, Voluntary Aided, Foundation and Trust schools. |
| 31 January 2020 | Input information from first cycle of exchange of allocation information. |
| 7 February 2020 | Second round of allocation information sent to other authorities. |
| 14 February 2020 | Input allocation information from second cycle and send final allocation information to other authorities of school place offers to be made. |
| 21 February 2020 | Input final allocation preference information and produce final allocation letters. |
| 2 March 2020 | National offer day. Send out allocation information to all parents applying for a school place. Inform schools of final allocation. |
| 16 March 2020 to 31 August 2020 | Manual adjustments to allocation and communicating those results to other authorities. |
| April 2020 to July 2020 | Statutory admission appeals. These dates may vary. |
| 31 December 2020 | Closure of waiting lists. |

Appendix 2

North Yorkshire Local Authority

Primary for Aided, Community, Voluntary Controlled and Foundation Schools and Academies Timetable 2020/21

| Date | Activity |
|---------------------------------|--|
| September 2019 | Information for parents and common application forms are available on the NYCC website for North Yorkshire parents. Parents without internet access to contact the LA for information. |
| 15 January 2020 | Closing date for the return of Common Application Forms. |
| 22 January 2020 | Neighbouring LAs to send us details of children in their area who have expressed preferences for schools in North Yorkshire (depending on their timetables). We send details of children expressing preferences for schools in other LA areas to those authorities for consideration. |
| 4 February 2020 | The LA send out details of all children who have expressed preferences for North Yorkshire Voluntary Aided, Academy, and Trust schools to the schools for consideration. |
| 11 February 2020 | Information to be returned to us by Voluntary Aided, Academy and Trust schools on which places they can allocate. |
| 11 March 2020 | Send first round of allocation information to other authorities identifying potential offer(s). |
| 18 March 2020 | Input information from first cycle of parental preferences. |
| 25 March 2020 | Send second allocation cycle information to other authorities |
| 29 March 2020 | Input preference information from second cycle and send final allocation information to other authorities. |
| 16 April 2020 | National offer day. Send out allocation information to all North Yorkshire parents. Inform schools of final allocations. |
| 30 April 2020 to 31 August 2020 | Manual adjustments to allocation and communicating those results to other authorities. |
| June 2020 to July 2020 | Statutory admission appeals. These dates may vary |
| 31 December 2020 | Closure of waiting list. |

Appendix 3

Primary Academy, Trust Schools and Foundation Schools

| | |
|---|---|
| <p>Airy Hill Primary School Waterstead Lane WHITBY YO21 1PZ Tel No: 01947 602688</p> | <p>All Saints C of E Primary School KIRKBY OVERBLOW Harrogate HG3 1HD Tel No: 01423 872491</p> |
| <p>Appleton Roebuck Primary School Main Street APPLETON ROEBUCK York YO23 7DN Tel No: 01904 501906</p> | <p>Askwith Community Primary School ASKWITH Otley LS21 2HX Tel No: 01943 462896</p> |
| <p>Aspin Park Academy Wetherby Road KNARESBOROUGH HG5 8LQ Tel No: 01423 863920</p> | <p>Baldersby St James CE Primary School BALDERSBY ST JAMES Thirsk YO7 4PT Tel No: 01765 640277</p> |
| <p>Barton CE Primary School Silver Street BARTON Richmond DL10 6LJ Tel No: 01325 377246</p> | <p>Bilton Grange CP School Bilton Lane HARROGATE HG1 3BA Tel No: 01423 502375</p> |
| <p>Braeburn Primary & Nursery Academy Eastfield SCARBOROUGH YO11 3LG Tel No: 01723 582616</p> | <p>Brotherton & Byram CP Academy Low Street BROTHERTON Knottingley, West Yorkshire WF11 9HQ Tel No: 01977 672676</p> |
| <p>Camblesforth CP Academy Mill Lane CAMBLESFORTH Selby YO8 8HW Tel No: 01757 618249</p> | <p>Carlton Miniott Primary Academy CARLTON MINIOTT Thirsk YO7 4NJ Tel No: 01845 522088</p> |
| <p>Castleton Primary School 38 High Street CASTLETON Whitby YO21 2DA Tel No: 01287 660496</p> | <p>Coppice Valley Primary School Knapping Hill HARROGATE HG1 2DN Tel No: 01423 563760</p> |
| <p>Croft Church of England Primary School South Parade CROFT-ON-TEES Darlington DL2 2SP Tel No: 01325 720528</p> | <p>East Cowton CE Primary School EAST COWTON Northallerton DL7 0BD Tel No: 01325 378347</p> |

| | |
|---|--|
| Eppleby Forcett CE Primary School EPPLEBY Richmond DL11 7AY Tel No: 01325 718298 | East Whitby Primary Academy Stainsacre Lane WHITBY YO22 4HU Tel No: 01947 895369 |
| Filey CE Infant & Nursery Academy Padbury Avenue FILEY YO14 0BA Tel No: 01723 513077 | Forest of Galtres Anglican/Methodist Primary School Station Lane SHIPTON BY BENINGBROUGH York YO30 1AG Tel No: 01904 470272 |
| Glaisdale Primary School GLAISDALE Whitby YO21 2PZ Tel No: 01947 897218 | Great Smeaton Academy Primary School, GREAT SMEATON Northallerton DL6 2EQ Tel No: 01609 881349 |
| Hampsthwaite CE Primary Church Lane HAMPSTHWAITE Harrogate HG3 2EZ Tel No: 01423 771336 | Hawes Primary School, Town Head HAWES DL8 3RQ Tel No: 01969 667308 |
| Hookstone Chase Primary School Hookstone Chase HARROGATE HG2 7DJ Tel No: 01423 886026 | Kellington Primary School Roall Lane KELLINGTON Goole DN14 0NY Tel No: 01977 661127 |
| Kirk Fenton CE Primary School Main Street CHURCH FENTON Tadcaster LS24 9RF Tel No: 01937 557228 | Kirkby Fleetham CE Primary School Forge Lane KIRKBY FLEETHAM Northallerton DL7 0SA Tel No: 01609 748431 |
| Knayton Church of England Academy Stockton Road KNAYTON Thirsk YO7 4AN Tel No: 01845 537291 | Lealholm Primary School LEALHOLM Whitby YO21 2AQ Tel No: 01947 897401 |
| Leyburn Primary School Wensleydale Avenue LEYBURN DL8 5SD Tel No: 01969 623187 | Lothersdale Primary School Lothersdale Keighley West Yorkshire, BD20 8HB Tel No: 01535 632510 |
| Meadowside Primary Academy Halfpenny Lane KNARESBOROUGH HG5 0SL Tel No: 01423 866207 | Trinity Academy Middleton Tyas Kneeton Lane Middleton Tyas RICHMOND DL10 6SF Tel No: 01325 377285 |

| | |
|--|--|
| <p>Monk Fryston CE Primary School Chestnut Green Monk Fryston LEEDS LS25 5PN Tel No: 01977 682388</p> | <p>New Park Primary Academy Skipton Road HARROGATE HG1 3HF Tel No: 01423 503011</p> |
| <p>Newby and Scalby Primary School The Green Newby SCARBOROUGH YO12 5JA Tel No: 01723 365686</p> | <p>North Rigton CE Primary School Hall Green Lane North Rigton LEEDS LS17 0DW Tel No:01423 734540</p> |
| <p>Oatlands Infant School Hookstone Road HARROGATE HG2 8BT Tel No: 01423 871036</p> | <p>Oatlands Community Junior School Beechwood Grove HARROGATE HG2 8QP Tel No: 01423 872827</p> |
| <p>Outwood Primary Academy Greystone Quarry Moor Lane RIPON HG4 1RW Tel No: 01765 603481</p> | <p>Pannal Primary School Pannal Green Pannal HARROGATE HG3 1LH Tel No: 01423 872407</p> |
| <p>Ravensworth CE Primary School Ravensworth RICHMOND DL11 7ET Tel No: 01325 718375</p> | <p>Richard Taylor CE Primary School Bilton Lane HARROGATE HG1 3DT Tel No: 01423 886026</p> |
| <p>Trinity Academy Richmond Frances Road Richmond DL10 4NF Tel No: 01748 822104</p> | <p>Riverside School, Tadcaster Wetherby Road TADCASTER LS24 9JN Tel No: 01937 832899</p> |
| <p>Roseberry Academy Roseberry Crescent Great Ayton MIDDLESBROUGH TS9 6EP Tel No: 01642 722883</p> | <p>Rossett Acre Primary School Pannal Ash Road HARROGATE HG2 9PH Tel No: 01423 561579</p> |
| <p>Saxton CE Primary School Dam Lane Saxton TADCASTER LS24 9QF Tel No: 01937 557396</p> | <p>Selby Community Primary School Flaxley Road SELBY YO8 4DL Tel No: 01757702464</p> |
| <p>Sherburn Hungate Primary School North Crescent Sherburn-in-Elmet LEEDS LS25 6DD Tel No: 01977 682434</p> | <p>South Milford Primary School Sand Lane South Milford LEEDS LS25 5AU Tel No: 01977 682359</p> |

| | |
|---|---|
| <p>South Otterington Church of England Primary School South Otterington NORTHALLERTON DL7 9HD Tel No: 01609 776273</p> | <p>Sowerby Primary Academy Topcliffe Road THIRSK YO7 1RX Tel No: 01845 523037</p> |
| <p>Stakesby Primary Academy Byland Road WHITBY YO21 1HY Tel No: 01947 820231</p> | <p>Staynor Hall Primary Academy Staynor Link SELBY YO8 8GE Tel No: 01757 681334</p> |
| <p>Stokesley Primary School No. 5 Springfield Stokesley MIDDLESBROUGH TS9 5EW Tel No: 01642 711071</p> | <p>St Joseph's Catholic Primary School, Harrogate, A Voluntary Academy Coppice Rise HARROGATE HG1 2DP Tel No: 01423 562650</p> |
| <p>St Mary's Primary School Knaresborough, A Voluntary Catholic Academy Tentergate Road KNARESBOROUGH HG5 9BG Tel No: 01423 864631</p> | <p>St Peter's Church of England Primary School Belford Road HARROGATE HG1 1JA Tel No: 01423 569684</p> |
| <p>St Stephen's Catholic Primary School and Nursery, A Voluntary Academy Gargrave Road SKIPTON BD23 1PJ Tel No: 01756 668395</p> | <p>Tadcaster Primary Academy Grange Avenue TADCASTER LS24 8AN Tel No: 01937 833795</p> |
| <p>Thomas Hinderwell Primary Academy Seamer Road SCARBOROUGH YO12 4HF Tel No: 01723 373110</p> | <p>Tockwith Church of England Primary Academy Southfield Lane Tockwith YORK YO26 7RP Tel No: 01423 358375</p> |
| <p>Topcliffe C of E Academy School Lane Topcliffe THIRSK YO7 3RG Tel No: 01845 577412</p> | <p>West Cliff Primary School Church Square WHITBY YO21 3EG Tel No: 01947 602510</p> |
| <p>Western Primary School Cold Bath Road Harrogate, HG2 0NA Tel No: 01423 502737</p> | <p>Nun Monkton Primary Foundation School The Green Nun Monkton YORK YO26 8ER Tel No: 01423 330313</p> |

1. Primary Voluntary Aided Primary Schools

| | |
|--|--|
| <p>All Saints RC Primary School Green Lane East THIRSK YO7 1NB Tel No: 01845 523058</p> | <p>Austwick C of E (VA) Primary School AUSTWICK Lancaster LA2 8BN Tel No: 015242 51366</p> |
| <p>Barkston Ash Catholic Primary School London Road Barkston Ash TADCASTER LS24 9PS Tel No 01937 557373</p> | <p>St Mary's C of E Primary School Bolton-on-Swale Scorton RICHMOND Tel No. 01748 818401</p> |
| <p>Burneston C of E (VA) Primary School BURNESTON Bedale DL8 6BP Tel No. 01677 423183</p> | <p>Burnsall VA Primary School BURNSALL Skipton BD23 6BP Tel No. 01756 720273</p> |
| <p>Carleton Endowed School Carleton SKIPTON BD23 3DE Tel No. 01756 792910</p> | <p>Carlton and Faceby C of E VA Primary School CARLTON-IN-CELEVELAND Middlesbrough Cleveland TS9 7BB Tel No. 01642 712340</p> |
| <p>Cawood C of E VA Primary School Broad Lane CAWOOD Selby YO8 3SQ Tel No. 01757 268368</p> | <p>Dacre Braithwaite C of E Primary School SUMMERBRIDGE Harrogate HG3 4AN Tel no. 01423 780285</p> |
| <p>Egton C of E VA Primary School EGTON Whitby YO21 1UT Tel No: 01947 895369</p> | <p>Kirkby in Malhamdale United VA Primary School KIRKBY MALHAM Skipton Tel No: 01729 830214</p> |
| <p>Kirkby & Great Broughton CofE VA Primary School KIRKBY-IN-CLEVELAND Middlesbrough TS9 7AL Tel No. 01642 714707</p> | <p>Long Preston Endowed VA Primary School School Lane LONG PRESTON Skipton BD23 4PN Tel No: 01729 840377</p> |
| <p>Marton cum Grafton C of E VA Primary School Reas Lane MARTON-CUM-GRAFTON York YO51 9QB Tel No. 01423 322355</p> | <p>Masham C of E VA Primary School 1 Millgate MASHAM Ripon HG4 4EG Tel No. 01765 689200</p> |

| | |
|---|---|
| Michael Syddall C of E (Aided) Primary School Mowbray Road CATTERICK VILLAGE Richmond DL10 7LH Tel No. 01748 818485 | Middleham C of E Aided School Park Lane MIDDLEHAM Leyburn DL8 4QX Tel No. 01969 623592 |
| Ripon Cathedral CE Primary School Priest Lane RIPON HG4 1LT Tel No. 01765 602355 | Sacred Heart RC Primary School Broomfield Avenue NORTHALLERTON DL7 8UL Tel No. 01609 780971 |
| St Benedict's RC Primary School Back Lane AMPLEFORTH York YO62 4DE Tel No. 01439 788340 | St George's RC Primary School Overdale Road Eastfield SCARBOROUGH YO11 3RE Tel No. 01723 58353 |
| St Hedda's RC Primary School EGTON BRIDGE Whitby YO21 1UX Tel No. 01947 895361 | St Hilda's RC Primary School Waterstead Lane WHITBY YO21 1PZ Tel No. 01947 603901 |
| St Joseph's Catholic Primary School Swainsea Lane PICKERING YO18 8AR Tel No. 01751 473102 | St Joseph's Catholic Primary School Station Road TADCASTER LS24 9JG Tel No. 01937 832344 |
| St Martin's C of E VA Primary School Holbeck Hill SCARBOROUGH YO11 3BW Tel No. 01723 360239 | St Mary's RC Primary School Highfield Road MALTON YO17 7DB Tel No. 01653 692274 |
| St Mary's RC Primary School Cross Lanes RICHMOND DL1 7DZ Tel No. 01748 821124 | St Mary's Catholic Primary School Baffam lane SELBY YO8 9AX Tel No. 01757 706616 |
| St Peter's C of E VA Primary School BRAFFERTON Helperby, York YO61 2PA Tel No. 01423 360250 | St Peter's RC Primary School North Leas Avenue SCARBOROUGH YO12 6LX Tel No. 01723 372720 |
| St Robert's Catholic Primary School Ainsty Road HARROGATE HG1 4AP Tel No. 01423 504730 | St Wilfrid's Catholic Primary School Church lane RIPON HG4 2ES Tel No. 01765 603232 |
| Terrington C of E VA Primary School TERRINGTON York YO60 6NS Tel No. 01653 6483340 | The Boyle & Petyt Primary School Harrogate Road BEAMSLEY Skipton BD23 6HE Tel No. 01756 710378 |

Appendix 4

Voluntary Aided, Academies, Foundation and Trust secondary schools are listed below:

Trust /Academies Secondary Schools:

| | |
|---|---|
| <p>Barlby High School York Road BARLBY Selby YO8 5JP Tel No: 01757 706161</p> | <p>Brayton Academy Doncaster Road SELBY YO8 9QS Tel No: 01757 707731</p> |
| <p>Ebor Academy Filey Muston Road FILEY YO14 0HG Tel No: 01723 512354</p> | <p>George Pindar Community Sports College Eastfield SCARBOROUGH YO11 3LX Tel No: 01723 582194</p> |
| <p>Harrogate Grammar School Arthurs Avenue HARROGATE HG2 0DZ Tel No. 01423 531127</p> | <p>Harrogate High School Ainsty Road HARROGATE HG1 4AP Tel: 01423 548800</p> |
| <p>Norton College Langton Road NORTON Malton YO17 9PT Tel No: 01653 693296</p> | <p>Outwood Academy Easingwold York Road EASINGWOLD York YO61 3EF Tel No: 01347 821451</p> |
| <p>Outwood Academy Ripon Clotherholme Road Ripon HG4 2DE Tel No: 01765 604564</p> | <p>Richmond School Darlington Road RICHMOND DL10 7BQ Tel No: 01748 850111</p> |
| <p>Rodillian (Brayton) Academy Doncaster Road BRAYTON Selby YO8 9QS Tel No: 01757 707731</p> | <p>Rossett School Green Lane HARROGATE HG2 9JP Tel: 01757 707731</p> |
| <p>Scalby School Fieldstead Crescent Newby SCARBOROUGH YO12 6TH Tel No: 01723 362301</p> | <p>Scarborough University Technical College Ashburn Rise SCARBOROUGH YO11 2JW Tel No: 01723 821621</p> |
| <p>Skipton Girls' High School Gargrave Road SKIPTON BD23 1QL Tel No: 01756 707600</p> | <p>South Craven School Holme Lane CROSSHILLS Keighley BD20 7RL Tel No: 01535 632861</p> |

| | |
|--|--|
| St Aidan's C of E High School Oatlands Drive HARROGATE HG2 8JR Tel No: 01423 885814 | Stokesley School Station Road STOKESLEY Middlesbrough TS9 5AL Tel No: 01642 710050 |
| Tadcaster Grammar School Toulston TADCASTER LS24 9NB Tel No: 01937 833466 | The Skipton Academy Gargrave Road SKIPTON BD23 1UQ Tel: 01756 792965 |

Voluntary Aided Secondary Schools:

| | |
|---|---|
| Holy Family Catholic High School Longhedge Lane CARLTON Goole East Yorkshire DN14 9NS Tel No. 01405 860276 | St Augustine's RC School Sandybed Lane Off Stepney Hill Scarborough YO12 5LH Tel No. 01723 363280 |
| St Francis Xavier School Darlington Road RICHMOND DL10 7DA Tel No. 01748 823414 | St John Fisher Catholic High School Hookstone Drive HARROGATE HG2 8PT Tel No. 01423 887254 |
| Ermysted's Grammar School Gargrave Road SKIPTON BD23 1PL Tel No. 01756 792186 | |

Neighbouring Local Authorities

Our thirteen neighbouring admission authorities

| | | |
|---|--|--|
| <p>Bradford Pupil Access Manager Education Bradford Future House Bolling Road BRADFORD BD4 7EB Tel No: 01274 385604</p> | <p>Cumbria Corporate Director – Pupils Services 5 Portland Square CARLISLE CA1 1PU Tel No. 01228 606877</p> | <p>Darlington Pupils's Information Service Town Hall, Feethams DARLINGTON DL1 5QT Tel No. 01325 380651</p> |
| <p>Doncaster Director of Education and Culture Admissions and Pupil Services The Council House College Road DONCASTER DN1 3AD Tel No. 01302 737204/727234</p> | <p>Durham School Admissions Education Offices County Hall DURHAM DH1 5UJ Tel No. 0191 383 3115</p> | <p>East Riding of Yorkshire Admissions Team Pupils, Family & Adult Services County Hall BEVERLEY HU17 9BA Tel No.01482 392130/392131/392132</p> |
| <p>Lancashire Director of Education PO Box 61 County Hall PRESTON PR1 0LD Tel No. 01772 254868</p> | <p>Leeds Admissions & Transport Team Leeds Education 10th Floor West Merrion House LEEDS LS2 8DT Tel No. 0113 2475729</p> | <p>Middlesbrough Corporate Director, Families and Learning Middlesbrough Council PO Box 69, First Floor Vancouver House Gurney Street MIDDLESBROUGH TS1 1 EL Tel No. 01642 728092</p> |
| <p>Redcar and Cleveland School Admissions Redcar and Cleveland Borough Council, Council Offices PO Box 83, Kirkleatham Street REDCAR TS10 1YA Tel No. 01642 444108</p> | <p>Stockton on Tees School Admissions Stockton-on-Tees Borough Council PO Box 228, Municipal Buildings Church Road STOCKTON ON TEES TS18 1XE Tel No. 01642 526605</p> | <p>Wakefield School Admissions County Hall, WAKEFIELD WF1 2QL Tel No. 01924 305616/305617</p> |
| <p>City of York School Services Children, Education and Communities City of York Council, West Offices Station Rise YORK YO1 6GA Tel No. 01904 551554</p> | | |



CO-ORDINATED ADMISSION ARRANGEMENTS

PRIMARY & SECONDARY IN-YEAR ADMISSIONS 2020/21

Introduction

1. In-year admissions are those which occur outside of the normal admissions round. The normal admissions round refers to admissions which admit children into infant, junior, primary or secondary school in the first year of entry. These applications become in-year if they are submitted on or after the first day of the first school term of the admission year.
2. There is no requirement for LAs to co-ordinate in-year applications from the offer year 2014/15 and all subsequent years but they must provide information on their website to show how in-year applications can be made and will be dealt with. LAs must, on request, provide information to a parent about the places available in all schools within its area. A preference form must be completed by parents when applying for a school place for their child at any Community or Voluntary Controlled school within North Yorkshire. A preference form will also need to be completed for any Voluntary Aided, Foundation, Trust primary and secondary schools and Academies including Free Schools that have agreed North Yorkshire LA will continue co-ordinating in-year admissions on their behalf. Any parent can apply for a place for their child at any time to any school.
3. In determining applications for school places outside the normal admissions round, whether in-year or at the start of a school year which is not a normal point of entry to the school, admission authorities must comply with parental preference unless the published oversubscription criteria or one of the statutory reasons for refusing admission applies.
4. All applications outside of the normal admissions round for Community, Voluntary Controlled and any Voluntary Aided, Foundation, Trust, primary and secondary schools and Academies including Free Schools that have agreed to continue co-ordinating with North Yorkshire LA will be processed and if applicable offered by the LA. Schools that are their own admission authority and are not continuing to co-ordinate in-year admissions with North Yorkshire LA must communicate the availability of places to the LA when requested and must, when in receipt of an in-year application notify the LA of both the application and its outcome. The Admission Authority must also inform parents of their right to appeal against the refusal of a school place.
5. Each LA must have a Fair Access Protocol, agreed with the majority of schools in its area to ensure that, outside the normal admissions round, unplaced children, especially the most vulnerable, are offered a place at a suitable school as quickly as possible. There is no duty for LAs or admission authorities to comply with parental preference when allocating places through the Fair Access Protocol.
6. Parents who do not wish to accept a place at a school offered to them must notify the admission authority in writing within 2 weeks of the offer being made.

Applying for a school place

7. North Yorkshire LA in-year preference forms must be completed by parents living or moving into North Yorkshire requesting a place at any North Yorkshire primary or secondary school. Proof of residency may be required.
8. If a child already attending a North Yorkshire school wishes to transfer to another school, parents should, in the first instance discuss the transfer with the current school.

9. Where a child is moving within or into North Yorkshire and is unable to attend the previous school and is without a school place, the application will be processed as soon as possible. Where a child already has a school place but is seeking an alternative school without moving, the application will be processed within a timescale that will enable the child to commence at the proposed new school at the start of the next term or half term. If there are more applications than places available for that year group, the oversubscription criteria will be applied.
10. Where UK passport holders or EU passport holders apply for a school place whilst living abroad, the application will be processed whilst they are still abroad up to 6 weeks in advance of the requested start date. For non EU residents applications will be processed on their arrival in the UK. Exceptions to this would be when an application is received from a forces family which is accompanied by a posting order/assignment order or an official letter that declares a relocation date and a unit postal address or an area address. We would accept a UK address from parents living abroad if they have an address in the UK and they can provide proof that they lived at that address immediately prior to their move abroad and will be returning to that same property.
11. When we receive an in-year preference form from a parent living in North Yorkshire requesting any North Yorkshire school, we will process the form by attempting to comply with the parent's highest ranked preference of school. We will liaise with the school listed as their highest preference.
12. If we are able to allocate the highest ranked preference on the form we will send an offer of that school place to the parent. If we are unable to allocate a place we will offer the statutory right of appeal and will then consider other schools listed in order of preference and will offer a place at one of those schools if possible. If we are unable to do so we will again offer parents the statutory right of appeal or ask that the governors of Voluntary Aided, Foundation or Trust schools who have agreed for North Yorkshire LA to co-ordinate in-year admissions to do so. Parents can appeal for a place at an Academy including Free Schools and would need to contact the LA for information on how to do so.
13. When we receive a request for a place in the normal year of entry if the school is oversubscribed a waiting list will be maintained by the relevant admission authority until 31 December 2020.
14. We require a reply within 5 working days from schools informing us if they are able to accommodate additional children. If they are oversubscribed we will offer parents the statutory right of appeal.
15. Voluntary Aided schools or Academies including Free Schools may require parents to complete a supplementary information form available from the school before a school place can be considered.
16. If parents name a school other than their catchment school, they will be responsible for transport.

Draft In Year Fair Access Protocol

September 2018

In Year Fair Access Protocol

Purpose

The Protocol will ensure that school places for maintained schools and Academies are allocated and offered in an open and fair way. Outside the normal admissions round, unplaced children (especially the most vulnerable), must be offered a place at a suitable school as quickly as possible. It is recognised that this will have a significant impact on attendance and achievement.

The School Admission Code which came into force on 1st December 2014 includes a requirement for a Fair Access Protocol (FAP) and describes how it is implemented. This protocol reflects the requirements of the admissions code. The Protocol must be agreed by the majority of schools and academies and all schools and academies must participate.

The Protocol will be used when a child or young person is identified as eligible or has not secured a school or academy place under the in year admission procedures.

The Protocol will also ensure that no school or academy, including those with available places, is asked to take a disproportionate number of children and young people who have been excluded from other schools or academies or who have challenging behaviour.

Once it has been agreed that a child or young person should attend a named school or academy that school or academy must be accountable for that person. There is a collective responsibility to ensure the safeguarding of all young people and we must work together to protect them and act in their best interests. Every young person will be made an offer of an educational place as soon as is reasonably practical and within 30 school days.

Principles

It is important to emphasise that, in the vast majority of cases, hard to place children in the categories listed below requiring a school place will continue to be admitted in accordance with the usual admission procedures, rather than through the protocol.

The protocol does not cover the admission of children with an Education Health Care Plan (EHCP) which will continue to be managed through the statutory processes.

All schools, including those who are their own admissions authority agree to admit hard to place pupil. The FAP will consider a 'weighting' for small secondary schools where the impact on small year groups may be considerable.

Schools will not insist on an admission appeal being heard before admitting a child under this protocol. There is no duty for local authorities or admission authorities to comply with parental preference when allocating through the In Year Fair Access protocol.

Schools will not refuse to admit a pupil who has been denied a place at that school at appeal, if the protocol identifies that school as the one to admit the child.

For a pupil to be placed at a North Yorkshire Grammar School in line with the In Year Fair Access criteria, he or she must also meet the academic criteria for that school. It should be noted that designated Grammar schools are permitted under the Education (Grammar School Designation) Order 1998 to select their intake on the basis. It would be appropriate to expect a short delay in the process to enable a child to access the appropriate selective test.

Wherever possible, pupils with a religious affiliation should be matched to a suitable school. If the school with a religious affiliation has already taken pupils under the protocol in that year group, then the pupil may be offered a place at a different school that doesn't have the religious affiliation.

Admissions agreed between schools under the Managed Moves protocol do not count as places allocated under this protocol. The local authority will collate data on the two schemes separately and make the data available to panels on a regular basis.

Whilst working within the spirit of the protocol local FAP's must use discretion and judgement to achieve the best outcome for the child concerned. For example, one school may have compelling reasons (agreed by the FAP) for not admitting to a particular year group at that time. The school might therefore agree to more pupils in a different year group.

Fair Access Protocols should not be used as a means to circumvent the normal in-year admissions process. A parent can apply for a place as an in-year admission at any point and is entitled to an appeal when a place is not offered. Schools following receipt of an application should not request that a pupil be considered as a Managed Move (MM) prior to dealing with such an application.

In the event that the majority of schools in an area can no longer support the principles and approach of the local Protocol, all the school heads should initiate a review with the local authority. The existing Protocol however remains binding on all schools up until the point at which a new one is adopted

The Process

The Fair Access Protocol must be agreed with the majority of schools in North Yorkshire and all own Admission Authorities must participate in it to ensure that children and young people are allocated a school place quickly.

The operation of the Protocol is triggered when a child is identified as hard to place through the information received, or an eligible child has not secured a school place under in-year admission arrangements. This provision does not apply to: children looked after by the local authority; a child previously looked after by the local authority or a child with a statement of special educational needs naming the school in question, as these children must be admitted. (Note 1)

Admission Authorities must not refuse to admit a child thought to be potentially disruptive, or likely to exhibit challenging behaviour, on the grounds that the child is first to be assessed for special educational needs.

No school will be asked to take a disproportionate number of children who have been excluded from other schools or who have challenging behaviour. Each FAP will determine an appropriate percentage based on local factors.

A list of children and young people that are 'eligible' to be considered is contained at the end of the Protocol.

The Secondary Protocol will be administered through locality Fair Access Panels. The operation of these Panels is described below.

The establishment of a Primary Protocol administered through Fair Access Panels on an ad hoc basis will be consulted upon in due course.

The operation of these Panels is described below.

Membership of the Fair Access Panels

The Secondary Panels will meet either virtually or in person and will consist of the Chair (to be determined by each locality), Head teachers of the locality schools or their designated deputy who has delegated authority. It may be appropriate that council officers are involved along with outside agencies when they have information that could contribute or assist the decision making process.

It is expected that the Primary Panels will meet virtually as and when required and the membership would consist of a Local Authority representative and the Head teachers of the preferred school/academy plus any other local schools as well as the current school (if appropriate). Other Council officers attending will be from teams within Children's Services - as well as any other team or department within NYCC or outside agencies working with families and young people, to contribute specific information about children and families that they are working with.

For Secondary Panels the attendance of the Chair is essential in co-ordinating the responses from head teachers within the FAP, recording and informing the decisions regarding the destination of students referred to the panel. Allocations will be made to schools, regardless of whether they contribute to the meeting, if appropriate and offers

made on the day will be binding unless exceptional circumstances or a safeguarding issue comes to light.

Monitoring and accountability

The school/academy nominated by a Panel will be accountable for the young person once a school place has been agreed at the meeting. Meetings will be held virtually on a weekly basis unless no applications under the IYFA protocol have been received. Meeting dates will be agreed in advance of the academic year. A record of decisions made by the FAP will be maintained by the clerk and submitted to the Local Authority following each meeting.

Each young person that is referred to the Panel will be discussed individually and the decision will be made by the Fair Access Panel as to what they determine is in the child's best interests taking parental preference into consideration and the facts of each case. The decision and the reason for it must be clearly recorded. (Note 2)

Clerks of the Fair Access Panels and the Local Authority should all keep a record of the outcomes of the meetings to avoid any disputes and advise of any issues within five school days of distribution.

In all cases the decision made by the Fair Access Panel will be relayed in writing by the admissions team to the parent/carer of the young person and the school/academy will contact the family to facilitate the admission.

Where a young person is to be offered a school/academy, the school/academy must meet with the parent/carer of the young person and start the admission of the young person no later than ten school days after the Fair Access Panel meeting.

The Admissions Team will inform parents of the progress of their case until a start date at an educational provision has been agreed. It is then the responsibility of the educational provider to liaise with the parent/carer.

The information received by admissions from the FAP will form an annual report on IYFA admissions the completed report will be shared with the chair of each FAP and will form the basis of the annual report to the Office of the Schools Adjudicator (OSR) which is a statutory requirement on the Local Authority.

Timelines

It is expected that all parties will act with a sense of urgency to identify a school place for any child who has had difficulty securing one or who falls under the Fair Access Protocol. The FAP will act to ensure that schools are held to account for the timeliness of their admissions in line with the IYFA protocol. Meetings will be virtual and will take place based on the number of FAP applications received to ensure that children are

enrolled within the timescales below. Every effort must be made to keep the time out of education to a minimum. Schools agree not to advise parents to:

Remove their child from school and find another school

Remove their child from the roll of the school and Electively Home Educate (EHE)

All schools, including Academies, are expected to respond to requests by the FAP to admit a child under Fair Access Protocols. The aim is to secure a place at a suitable school or academy as quickly as possible and although 30 school days is the maximum stated in this protocol our intention is to act as quickly as possible.

In compliance with the Pupil Registration Regulations the Local Authority must notify the school/academy of the date by which the child is to be admitted and on the school roll.

Decision Making

Children and young people will only be referred to Panel who have been identified as eligible based on the information received by the admissions team or where a child has been refused entry through the normal admissions process, any refusal under the normal admissions process must include a full explanation of why the young person cannot be admitted with regard to the prejudice of efficient education and efficient use of resources. (Note 2)

Where a Fair Access Panel judges that a child is not yet ready for mainstream provision, based on the information provided, they will allocate a school roll and will consider which provisions are appropriate. The school is responsible for securing appropriate full-time educational provision.

The decision as to which school/academy will be offered to a child will be taken by the Fair Access Panel as a whole. Where a Panel fails to make a decision the Chair will make those decisions in partnership with the Local Authority Inclusion officer. This will ensure that the Panels representative (Chair) has input into the decision of instructions and will support a request for direction from the EFA, if required.

Children returning from Elective Home Education should be offered a place at the school which they previously attended if appropriate. If the child now lives outside of the previous school's Panel area and there is a more appropriate or accessible school within a different area, an alternative should be considered, once the child is back on roll at their previous school unless there are exceptional circumstances which would prevent a return to that school e.g. safeguarding issues, distance

Children returning to an area in which they previously lived, should be offered a place at the school which they previously attended, unless they left due to extended leave when it is up to the Panel to determine if this is appropriate. The Panel may also

consider previous attendance, behaviour and any safeguarding issues in their decision making. This only applies to children continuing in the same phase of education.

Children who are referred to a Fair Access Panel due to being out of education for two months or more will be referred because they have not accessed any education at all, anywhere.

Local Authority Instruction

If a Fair Access Panel does not make an offer of a school place, the Local Authority will identify a school/academy to admit the young person taking into consideration the number of young people already accepted by each school under the Protocol and the accessibility of the school/academy for the young person. Consideration can also be given to any other personal circumstances of the young person.

The allocated school/academy may not always be within the Panel area within which the young person lives. (Note 3)

If a school/academy refuses to agree to an 'instruction' from the Local Authority they must put their reasons in writing within seven days. The Local Authority and Chair will then consider the reasons given and decide whether or not to issue a direction (community schools) or in the case of Academies refer the matter to the Education Funding Agency using the processes in place to seek a direction.

Children and young people eligible to be considered under the protocol

The list of children included within this FAP includes the following children of compulsory school age who may have difficulty securing a school place:

Mandatory

- a) Children from the criminal justice system or Pupil Referral Units who need to be reintegrated into mainstream education;
- b) Children who have been out of education for two months or more;
- c) Children of Gypsies, Roma, Travellers, refugees and asylum seekers;
- d) Children who are homeless;
- e) Children with unsupportive family backgrounds for whom a place has not been sought;
- f) Children who are carers; and
- g) Children with special educational needs, disabilities or medical conditions (but without an Education, Health and Care Plan).

- h) Children permanently excluded from a school or children with fixed term exclusions exceeding 15 days in the current academic year;
- i) Children without a school place and with a history of serious attendance problems (i.e. less than 85% attendance)

Locally agreed categories

- a) HM Forces children moving into area
- b) Children returning from EHE
- c) Children that have been missing from education (CME)
- d) Children who are permanently excluded who are not placed/referred to the Behaviour & Attendance Collaborative
- e) Children whose parents have been unable to find them a place after moving to the area because of a shortage of places within a 'reasonable distance' as defined in legislation.

General application of the protocol

Following a consultation with head teachers it was agreed that the local authority would revisit the protocol in light of discussions and the feedback received. The Local authority has amended the protocol to ensure effective integration of children outside of the normal admission rounds who are vulnerable and to ensure compliance of the requirement within the IYFA protocol (admission code 2014).

As part of the discussion and feedback it was clear that a more effective process would be to use a Fair Access Panel (FAP). A FAP would consist of head teachers within existing locality areas. It is expected that each FAP would nominate/elect a chair and that the chair would take on the responsibility of ensuring compliance of the new protocol. Details on how the FAP will operate can be found at annex 1

Transport

Free or assisted transport will be provided to enable a pupil to attend the school agreed by the panel if it is over two miles from home for primary age pupils under the age of 8 and three miles from home for all other pupils. Transport provision will comply with the Home to School Transport Policy.

Financial procedures

Where a pupil is permanently excluded the excluding school must return any remaining Age Weighted Pupil Unit (AWPU) and Pupil Premium (PP) funding for that particular pupil to the Local Authority for transfer to the receiving school.

Cross Border issues

The Local Authority will consult with neighbouring authorities over financial arrangements and equity for pupils who meet the IYFA protocol, and who attend school in one authority and live in another. It is the home local authority who has responsibility for the IYFA of their pupils.

NOTES:

Note 1

Children who are Looked After by the Local Authority or children who are Formerly Looked After by the Local Authority (in accordance with the School Admissions Code of Practice 2014) must always be admitted to the preferred school when requested by the legal guardian. The Code applies to all schools regardless of status and these requests are dealt with through the normal In Year Admission process.

Note 2

Admissions undertake background checks with the previous school. On receipt of this information, the Admissions Team will pursue any additional background checks which are needed. This information should provide the FAP with the details required to make an informed decision in the best interest of the child. Details of these decisions should be recorded accurately and retained.

Note 3

It may sometimes be necessary to instruct a school to take a child even if the child does not live in their area. Any instructions will only be made after careful consideration of the child's individual circumstances and in partnership with the Chair of all Panels affected. This recognises that our geographical boundaries can result in a child having to travel unreasonable distances.

The online mid-year admission application form now contains specific questions in respect of IYFA. The protocol seeks to ensure that access to education is secured quickly for children who have no school place but for whom a place at a mainstream school or alternative provision is appropriate.

Questions within the application form include:

- a) Has the child had more than 15 day's absence from school? (1)
- b) Has the child had a permanent exclusion? (7)
- c) Has the child had a fixed term exclusion from any school? (3 points for under 15 days, 7 points for over 15 days)
- d) Has the child received Managed Move from any school? (5)
- e) Have there been any other behavioural difficulties in school? (3)
- f) Has there been any other involvement with social care or other public agencies? (3)
- g) Is the child home educated? (7)
- h) Has the child been out of school more than two months? (7)
- i) Is the child currently attending a PRS? (7)

Confirmation of the presence of any difficulties ascertain through the admission questions will be investigated by the admissions team to confirm the accuracy of information provided through contact with the previous school.

An email will be sent to the previous school requesting further information to inform a decision about whether the application should be considered under general admission or the IYFA protocol. There will be a requirement on the previous school to respond within 7 working days.

Once confirmation has been received a decision will be made using a point based system. The points allocated for each positive response to the questions above are illustrated by the figures within the brackets. The threshold for applications to be considered by the FAP is 7 points or more.

Admissions will send all applications and supporting evidence to the FAP Clerk via secure email who will compile the agenda for the FAP and circulate to all members in advance of the meeting.

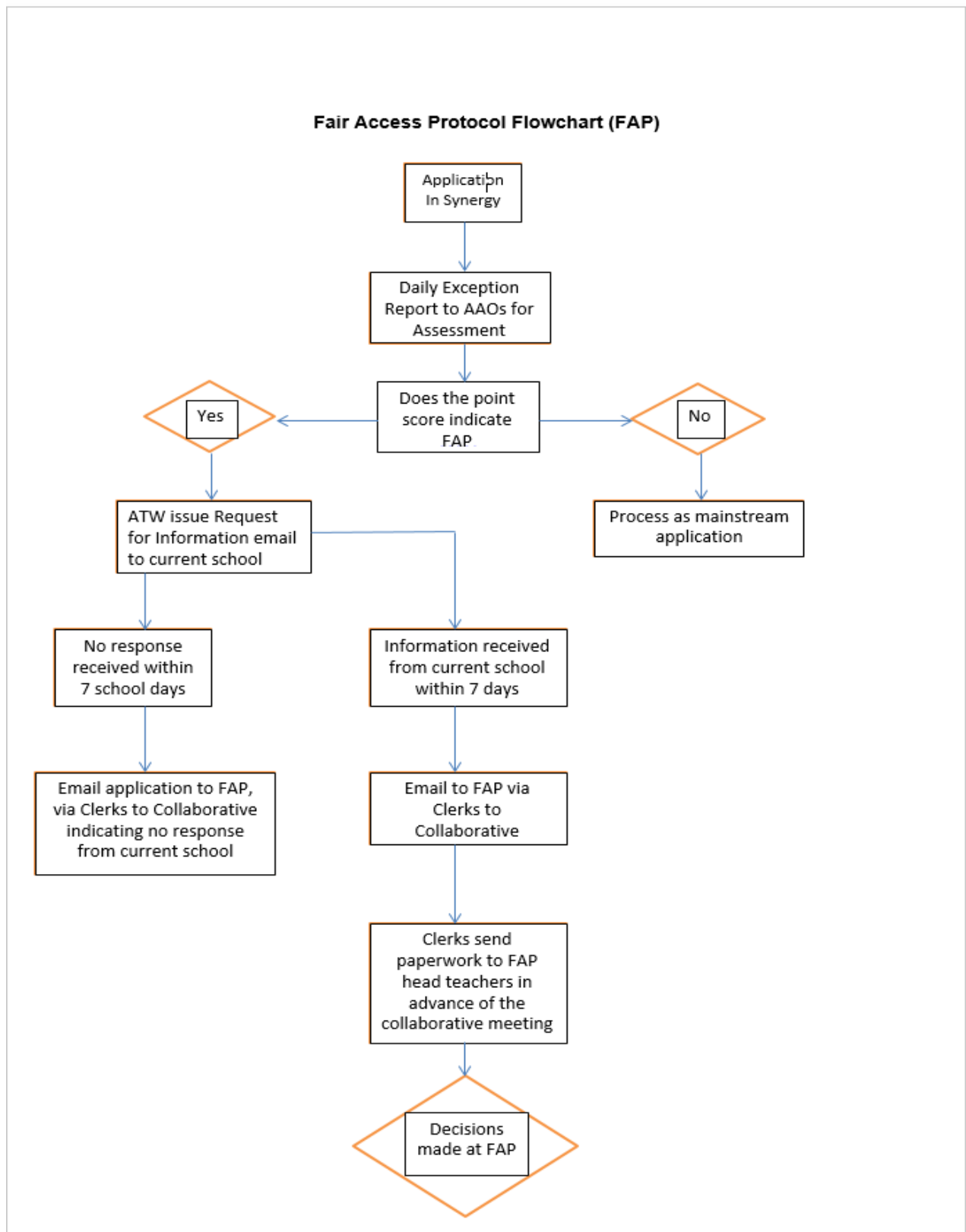
Applications identified under the protocol will be considered by the Fair Access Panel (FAP) who will decide to offer a place at either the requested or alternative school.

The Clerk will collate a record of decisions using the template provided (Appendix 2) and return this to the admissions team within 5 days of the meeting. Following receipt of the record of decision and confirmation that there is no dispute in the decision made the admissions team will allocate to the school indicated and inform parents via letter with a copy also being sent to the allocated school for information.

Appendix 1 – Flow chart

Appendix 2 - Return template

Appendix 1



Appendix 2

FAIR ACCESS PROTOCOL REQUEST SHEET

AREA – (Name of area)

| | |
|--|--|
| Child's name: | |
| Child's date of birth: | |
| Parent's name: | |
| Contact details: | |
| Schools preferred: | <ol style="list-style-type: none"> 1. A 2. B 3. C 4. D 5. E |
| Supporting evidence attached: | Yes / No |
| Type of evidence submitted: | |
| Date data sent to FAP: | |
| Date chased: (if no response within 7 days) | |
| FAP decision: | |
| Reasons for decision: | |
| Date decision received from FAP: | |

| DfE No. 815- | School | Aided, Academy, Trust etc | Published Admission Number 2019/20 | Proposed Published Admission Number 2020/21 |
|-----------------|---|---------------------------|--|--|
| 3000 | Ainderby Steeple Church of England Primary School | Academy converter | 20 | 20 |
| 2190 | Airy Hill Primary School | Academy converter | 30 | 30 |
| 3001 | Aiskew, Leeming Bar Church of England Primary School | Voluntary controlled | 14 | 14 |
| 2150 | Alanbrooke School | Community | 15 | 15 |
| 3361 | All Saints Church of England School | Academy converter | 15 | 15 |
| 3616 | All Saints Roman Catholic Primary School | Voluntary aided | 14 | 14 |
| 2245 | Alne Primary School | Community | 21 | 21 |
| 2242 | Alverton Primary School | Community | 30 | 30 |
| 2246 | Amotherby Community Primary School | Community | 30 | 30 |
| 2080 | Applegarth Primary School | Community | 40 | 40 |
| 2301 | Appleton Roebuck Primary School | Academy converter | 15 | 15 |
| 2247 | Appleton Wiske Community Primary School | Community | 14 | 14 |
| 3006 | Arkengarthdale Church of England Primary School | Voluntary controlled | 8 | 8 |
| 3289 | Askrigg Voluntary Controlled Primary School | Voluntary controlled | 7 | 7 |
| 2302 | Askwith Community Primary School | Academy converter | 15 | 15 |
| 2377 | Aspin Park Academy | Academy converter | 60 | 60 |
| 3350 | Austwick Church of England VA Primary School | Voluntary aided | 10 | 10 |
| 3008 | Bainbridge Church of England Primary and Nursery School | Voluntary controlled | 8 | 8 |
| 3009 | Baldersby St James Church of England Primary School | Academy converter | 8 | 8 |
| 3369 | Barkston Ash Catholic Primary School | Voluntary aided | 20 | 20 |
| 2400 | Barby Bridge Community Primary School | Community | 22 | 27 |
| 2401 | Barby Community Primary School | Community | 48 | 48 |
| 3223 | Barlow Church of England Voluntary Controlled Primary School | Voluntary controlled | 12 | 12 |
| 2108 | Barrowcliff School | Community | 60 | 60 |
| 3133 | Barton Church of England Primary School | Academy converter | 11 | 11 |
| 2390 | Barwic Parade Community Primary School, Selby | Community | 37 | 37 |
| 2348 | Beckwithshaw Community Primary School | Community | 14 | 14 |
| 3010 | Bedale Church of England Primary School | Voluntary controlled | 60 | 60 |
| 2305 | Bentham Community Primary School | Community | 25 | 30 |
| 3012 | Bilsdale Midcable Chop Gate Church of England Voluntary Controlled Primary School | Voluntary controlled | 6 | 6 |
| 3226 | Birstwith Church of England Primary School | Voluntary controlled | 12 | 12 |
| 3227 | Bishop Monkton Church of England Primary School | Voluntary controlled | 15 | 15 |
| 3228 | Bishop Thornton Church of England Primary School | Voluntary controlled | 8 | 8 |
| 3301 | Bolton-on-Swale St Mary's CofE Primary School | Voluntary aided | 14 | 14 |
| 2309 | Boroughbridge Primary School | Community | 36 | 36 |
| 2310 | Bradleys Both Community Primary School | Community | 19 | 19 |
| 2010 | Braeburn Primary and Nursery Academy | Academy sponsor led | 70 | 70 |
| 3231 | Brayton Church of England Voluntary Controlled Primary School | Voluntary controlled | 60 | 60 |
| 2250 | Brompton and Sawdon Community Primary School | Community | 10 | 10 |
| 2249 | Brompton Community Primary School | Community | 30 | 30 |
| 3015 | Brompton-on-Swale Church of England Primary School | Voluntary controlled | 30 | 30 |
| 2225 | Broomfield School | Community | 37 | 37 |
| 2001 | Brotherton and Byram Community Primary Academy | Academy sponsor led | 30 | 30 |
| 3337 | Burneston Church of England Voluntary Aided Primary School | Voluntary aided | 19 | 19 |
| 3352 | Burnsall Voluntary Aided Primary School | Voluntary aided | 12 | 12 |
| 3232 | Burton Leonard Church of England Primary School | Voluntary controlled | 10 | 10 |
| 2312 | Burton Salmon Community Primary School | Community | 7 | 8 |
| 2004 | Camblesforth Community Primary Academy | Academy sponsor led | 17 | 17 |
| 3354 | Carleton Endowed CofE Primary School | Voluntary aided | 20 | 20 |
| 3306 | Carlton and Faceby Church of England Voluntary Aided Primary School | Voluntary aided | 8 | 8 |
| 2252 | Carlton Miniott Primary Academy | Academy converter | 30 | 30 |
| 2314 | Carlton-in-Snaith Community Primary School | Community | 28 | 28 |
| 2256 | Castleton Primary School | Academy converter | 8 | 8 |
| 2212 | Catterick Garrison, Carnagill Community Primary School | Community | 30 | 30 |
| 2173 | Catterick Garrison, Le Cateau Community Primary School | Community | 75 | 75 |
| 2189 | Catterick Garrison, Wavell Community Infant School | Community | 72 | 72 |
| 3355 | Cawood Church of England Voluntary Aided Primary School | Voluntary aided | 21 | 21 |
| 2224 | Cayton Community Primary School | Community | 30 | 30 |
| 3233 | Chapel Haddlesey Church of England Voluntary Controlled Primary School | Voluntary controlled | 10 | 10 |
| 3273 | Christ Church Church of England Voluntary Controlled Primary School | Voluntary controlled | 20 | 20 |
| 3234 | Clapham Church of England Voluntary Controlled Primary School | Voluntary controlled | 8 | 8 |
| 3150 | Cliffe Voluntary Controlled Primary School | Voluntary controlled | 15 | 17 |
| 2167 | Colburn Community Primary School | Community | 40 | 40 |
| 2316 | Cononley Community Primary School | Community | 21 | 21 |
| 2383 | Coppice Valley Primary School | Academy converter | 30 | 30 |
| 2317 | Cowling Community Primary School | Community | 19 | 19 |
| 3235 | Crace and Rylstone Voluntary Controlled Church of England Primary School | Voluntary controlled | 7 | 7 |
| 3020 | Crakehall Church of England Primary School | Voluntary controlled | 14 | 20 |
| 3021 | Crayke Church of England Voluntary Controlled Primary School | Voluntary controlled | 13 | 13 |
| 3022 | Croft Church of England Primary School | Academy converter | 15 | 15 |
| 3357 | Dacre Braithwaite Church of England Primary School | Voluntary aided | 10 | 10 |
| 3025 | Danby Church of England Voluntary Controlled School | Voluntary controlled | 10 | 10 |
| 2347 | Darley Community Primary School | Community | 14 | 14 |

| DfE No. 815- | School | Aided, Academy, Trust etc | Published Admission Number 2019/20 | Proposed Published Admission Number 2020/21 |
|-----------------|--|---------------------------|--|--|
| 2165 | Dishforth Airfield Community Primary School | Community | 27 | 27 |
| 3027 | Dishforth Church of England Voluntary Controlled Primary School | Voluntary controlled | 14 | 14 |
| 2164 | Easingwold Community Primary School | Community | 45 | 45 |
| 2257 | East Ayton Community Primary School | Community | 30 | 30 |
| 3030 | East Cowton Church of England Primary School | Academy converter | 8 | 8 |
| 2154 | East Whitby Primary Academy | Academy converter | 45 | 45 |
| 3308 | Egton Church of England Voluntary Aided Primary School | Voluntary aided | 8 | 10 |
| 3236 | Embsay Church of England Voluntary Controlled Primary School | Voluntary controlled | 30 | 30 |
| 3153 | Escrick Church of England Voluntary Controlled Primary School | Voluntary controlled | 20 | 20 |
| 2320 | Fairburn Community Primary School | Community | 8 | 8 |
| 3154 | Filey Church of England Nursery and Infants Academy | Academy converter | 76 | 76 |
| 2413 | Filey Junior School | Community | 80 | 80 |
| 3237 | Follifoot Church of England Primary School | Voluntary controlled | 9 | 9 |
| 3288 | Forest of Galtres Anglican/Methodist Primary School | Academy converter | 27 | 27 |
| 3039 | Foston Church of England Voluntary Controlled Primary School | Voluntary controlled | 4 | 4 |
| 3266 | Fountains Church of England Primary School | Voluntary controlled | 15 | 15 |
| 3238 | Fountains Earth, Lofthouse Church of England Endowed Primary School | Voluntary controlled | 6 | 6 |
| 2114 | Friarage Community Primary School | Community | 60 | 60 |
| 3139 | Fylingdales Church of England Voluntary Controlled Primary School | Voluntary controlled | 16 | 16 |
| 3285 | Gargrave Church of England Voluntary Controlled Primary School | Voluntary controlled | 18 | 18 |
| 2324 | Giggleswick Primary School | Community | 13 | 13 |
| 3040 | Gillamoor Church of England Voluntary Controlled Primary School | Voluntary controlled | 8 | 8 |
| 2117 | Gladstone Road Primary School | Community | 120 | 120 |
| 2041 | Glaisdale Primary School | Academy converter | 8 | 8 |
| 2338 | Glasshouses Community Primary School | Community | 10 | 10 |
| 2393 | Glusburn Community Primary School | Community | 50 | 50 |
| 2043 | Goathland Primary School | Community | 7 | 7 |
| 3240 | Goldsborough Church of England Primary School | Voluntary controlled | 12 | 12 |
| 3241 | Grassington Church of England Voluntary Controlled Primary School | Voluntary controlled | 12 | 12 |
| 2327 | Great Ouseburn Community Primary School | Community | 14 | 14 |
| 2047 | Great Smeaton Academy Primary School | Academy converter | 10 | 10 |
| 3242 | Green Hammerton Church of England Primary School | Voluntary controlled | 17 | 17 |
| 3243 | Grewelthorpe Church of England Primary School | Voluntary controlled | 10 | 10 |
| 3207 | Gunnorside Methodist Primary School | Voluntary controlled | 7 | 7 |
| 3045 | Hackforth and Hornby Church of England Primary School | Voluntary controlled | 6 | 6 |
| 3046 | Hackness Church of England Voluntary Controlled Primary School | Voluntary controlled | 10 | 10 |
| 3244 | Hambleton Church of England Voluntary Controlled Primary School | Voluntary controlled | 25 | 25 |
| 3245 | Hampsthwaite Church of England Primary School | Academy converter | 15 | 15 |
| 2328 | Harrogate, Bilton Grange Community Primary School | Academy converter | 48 | 48 |
| 2329 | Harrogate, Grove Road Community Primary School | Community | 40 | 40 |
| 2005 | Hawes Primary School | Academy sponsor led | 15 | 15 |
| 3050 | Hawsker Cum Stainsacre Church of England Voluntary Controlled Primary School | Voluntary controlled | 12 | 12 |
| 2336 | Hellfield Community Primary School | Community | 15 | 15 |
| 2236 | Helmsley Community Primary School | Community | 24 | 24 |
| 2402 | Hemingbrough Community Primary School | Community | 30 | 30 |
| 2337 | Hensall Community Primary School | Community | 21 | 18 |
| 3155 | Hertford Vale Church of England Voluntary Controlled Primary School, Staxton | Voluntary controlled | 22 | 18 |
| 3053 | Hipswell Church of England Primary School | Voluntary controlled | 30 | 30 |
| 3284 | Holy Trinity CofE Infant School | Voluntary controlled | 65 | 60 |
| 3263 | Holy Trinity CofE Junior School | Voluntary controlled | 65 | 60 |
| 2368 | Hookstone Chase Primary School | Academy converter | 50 | 50 |
| 3054 | Hovingham Church of England Voluntary Controlled Primary School | Voluntary controlled | 8 | 8 |
| 3055 | Huby Church of England Voluntary Controlled Primary School | Voluntary controlled | 16 | 16 |
| 2403 | Hunmanby Primary School | Community | 30 | 30 |
| 2063 | Hunton and Arrathorne Community Primary School | Community | 10 | 10 |
| 3057 | Husthwaite Church of England Voluntary Controlled Primary School | Voluntary controlled | 15 | 15 |
| 2228 | Hutton Rudby Primary School | Community | 30 | 30 |
| 3060 | Ingleby Greenhow Church of England Voluntary Controlled Primary School | Voluntary controlled | 10 | 10 |
| 2391 | Ingleton Primary School | Community | 26 | 26 |
| 3076 | Kell Bank Church of England Primary School | Voluntary controlled | 5 | 5 |
| 2422 | Kellington Primary School | Academy converter | 19 | 19 |
| 2321 | Kettlesing Felliscliffe Community Primary School | Community | 10 | 10 |
| 2343 | Kettlewell Primary School | Community | 7 | 7 |
| 3287 | Kildwick Church of England Voluntary Controlled Primary School | Voluntary controlled | 17 | 17 |
| 3248 | Killinghall Church of England Primary School | Voluntary controlled | 22 | 22 |
| 3062 | Kirby Hill Church of England Primary School | Voluntary controlled | 20 | 22 |
| 3251 | Kirk Fenton Church of England Primary School | Academy converter | 35 | 35 |
| 3252 | Kirk Hammerton Church of England Primary School | Voluntary controlled | 12 | 12 |
| 3253 | Kirk Smeaton Church of England Voluntary Controlled Primary School | Voluntary controlled | 15 | 15 |
| 3315 | Kirkby and Great Broughton Church of England Voluntary Aided Primary School | Voluntary aided | 18 | 18 |
| 3065 | Kirkby Fleetham Church of England Primary School | Academy converter | 9 | 9 |
| 3360 | Kirkby in Malhamdale United Voluntary Aided Primary School | Voluntary aided | 12 | 12 |
| 3249 | Kirkby Malzeard Church of England Primary School | Voluntary controlled | 15 | 15 |

| DfE No. 815- | School | Aided, Academy, Trust etc | Published Admission Number 2019/20 | Proposed Published Admission Number 2020/21 |
|-----------------|---|---------------------------|--|--|
| 2064 | Kirkbymoorside Community Primary School | Community | 35 | 30 |
| 3903 | Knaresborough St John's CofE Primary School | Voluntary controlled | 50 | 50 |
| 3068 | Knayton Church of England Academy | Academy converter | 20 | 20 |
| 2404 | Langton Primary School | Community | 15 | 15 |
| 2042 | Lealholm Primary School | Academy converter | 8 | 8 |
| 2405 | Leavening Community Primary School | Community | 10 | 10 |
| 2040 | Leeming and Londonderry Community Primary School | Community | 8 | 8 |
| 2166 | Leeming RAF Community Primary School | Community | 40 | 40 |
| 2065 | Leyburn Primary School | Academy converter | 30 | 30 |
| 2233 | Lindhead School | Community | 30 | 30 |
| 2171 | Linton-on-Ouse Primary School | Community | 15 | 15 |
| 3255 | Long Marston Church of England Voluntary Controlled Primary School | Voluntary controlled | 8 | 8 |
| 3362 | Long Preston Endowed Voluntary Aided Primary School | Voluntary aided | 12 | 12 |
| 2346 | Lothersdale Primary School | Academy converter | 15 | 15 |
| 2406 | Luttons Community Primary School | Community | 8 | 8 |
| 3069 | Lythe Church of England Voluntary Controlled Primary School | Voluntary controlled | 15 | 15 |
| 2074 | Malton Community Primary School | Community | 42 | 42 |
| 3256 | Markington Church of England Primary & Nursery School | Voluntary controlled | 12 | 12 |
| 3363 | Marton-Cum-Grafton Church of England Voluntary Aided Primary School | Voluntary aided | 15 | 15 |
| 3042 | Marwood Church of England Voluntary Controlled Infant School, Great Ayton | Voluntary controlled | 21 | 21 |
| 3319 | Masham Church of England VA Primary School | Voluntary aided | 20 | 20 |
| 2389 | Meadowside Academy | Academy converter | 30 | 30 |
| 3208 | Melsonby Methodist Primary School | Voluntary controlled | 10 | 10 |
| 3307 | Michael Syddall Church of England Aided Primary School | Voluntary aided | 36 | 36 |
| 3320 | Middleham Church of England Aided School | Voluntary aided | 15 | 15 |
| 2163 | Mill Hill Community Primary School | Community | 30 | 30 |
| 3257 | Monk Fryston Church of England Primary School | Academy converter | 30 | 30 |
| 2366 | Moorside Infant School | Community | 36 | 30 |
| 2367 | Moorside Junior School | Community | 36 | 30 |
| 2075 | Nawton Community Primary School | Community | 15 | 15 |
| 2330 | New Park Primary Academy | Academy converter | 40 | 40 |
| 2076 | Newby and Scalby Primary School | Academy converter | 60 | 60 |
| 2081 | North and South Cowton Community Primary School | Community | 7 | 7 |
| 2407 | North Duffield Community Primary School | Community | 25 | 25 |
| 3260 | North Rigton Church of England Primary School | Academy converter | 15 | 15 |
| 3258 | North Stainley Church of England Primary School | Voluntary controlled | 8 | 8 |
| 2408 | Norton Community Primary School | Community | 90 | 90 |
| 5200 | Nun Monkton Primary Foundation School | Foundation | 4 | 4 |
| 2060 | Oakridge Community Primary School | Community | 6 | 6 |
| 2376 | Oatlands Community Junior School | Academy converter | 75 | 90 |
| 2331 | Oatlands Infant School | Academy converter | 90 | 90 |
| 2083 | Osmotherley Primary School | Community | 10 | 10 |
| 2008 | Outwood Primary Academy Greystone | Academy sponsor led | 28 | 28 |
| 2372 | Pannal Primary School | Academy converter | 60 | 60 |
| 2235 | Pickering Community Infant School | Community | 75 | 75 |
| 2222 | Pickering Community Junior School | Community | 75 | 75 |
| 3088 | Pickhill Church of England Primary School | Voluntary controlled | 9 | 9 |
| 3090 | Ravensworth Church of England Primary School | Academy converter | 12 | 12 |
| 2096 | Reeth Community Primary School | Community | 8 | 8 |
| 2410 | Riccall Community Primary School | Community | 30 | 30 |
| 3368 | Richard Taylor Church of England Primary School | Academy converter | 39 | 39 |
| 3210 | Richmond Methodist Primary School | Voluntary controlled | 45 | 45 |
| 2411 | Rillington Community Primary School | Community | 20 | 20 |
| 3261 | Ripley Endowed Church of England School | Voluntary controlled | 13 | 13 |
| 3262 | Ripon Cathedral Church of England Primary School | Voluntary aided | 30 | 30 |
| 2427 | Riverside School, Tadcaster | Academy converter | 60 | 60 |
| 3264 | Roecliffe Church of England Primary School | Voluntary controlled | 14 | 14 |
| 2097 | Romanby Primary School | Community | 40 | 40 |
| 2426 | Roseberry Academy | Academy converter | 30 | 30 |
| 2098 | Rosedale Abbey Community Primary School | Community | 7 | 7 |
| 2382 | Rossett Acre Primary School | Academy converter | 60 | 60 |
| 3126 | Ruswarp Church of England Voluntary Controlled Primary School | Voluntary controlled | 15 | 15 |
| 3902 | Sacred Heart RC Primary School | Voluntary aided | 15 | 15 |
| 2424 | Saltergate Community Junior School | Community | 60 | 60 |
| 2425 | Saltergate Infant School | Community | 60 | 60 |
| 3099 | Sand Hutton Church of England Voluntary Controlled Primary School | Voluntary controlled | 11 | 11 |
| 2009 | Saxton Church of England Primary School | Academy sponsor led | 8 | 10 |
| 2120 | Scarborough, Northstead Community Primary School | Community | 90 | 90 |
| 2170 | Scarborough, Overdale Community Primary School | Community | 30 | 30 |
| 2350 | Scotton Lingerfield Community Primary School | Community | 12 | 12 |
| 2223 | Seamer and Irtton Community Primary School | Community | 60 | 60 |
| 3268 | Selby Abbey Church of England Voluntary Controlled Primary School | Voluntary controlled | 56 | 56 |
| 2351 | Selby Community Primary School | Academy converter | 56 | 60 |

| DfE No. 815- | School | Aided, Academy, Trust etc | Published Admission Number 2019/20 | Proposed Published Admission Number 2020/21 |
|-----------------|---|---------------------------|--|--|
| 2418 | Selby, Longman's Hill Community Primary School | Community | 30 | 30 |
| 3101 | Sessay Church of England Voluntary Controlled Primary School | Voluntary controlled | 15 | 15 |
| 3270 | Settle Church of England Voluntary Controlled Primary School | Voluntary controlled | 30 | 30 |
| 3160 | Settrington All Saints' Church of England Voluntary Controlled Primary School | Voluntary controlled | 9 | 9 |
| 3271 | Sharow Church of England Primary School | Voluntary controlled | 9 | 9 |
| 3161 | Sherburn Church of England Voluntary Controlled Primary School | Voluntary controlled | 8 | 8 |
| 2380 | Sherburn Hungate Primary School | Academy converter | 30 | 30 |
| 2421 | Sherburn in Elmet, Athelstan Community Primary School | Community | 60 | 60 |
| 2186 | Sheriff Hutton Primary School | Community | 15 | 15 |
| 2354 | Sicklinghall Community Primary School | Community | 9 | 9 |
| 2221 | Sinnington Primary School | Community | 12 | 12 |
| 3272 | Skelton Newby Hall Church of England Primary School | Voluntary controlled | 7 | 7 |
| 3274 | Skipton Parish Church of England Voluntary Controlled Primary School | Voluntary controlled | 50 | 50 |
| 2365 | Skipton, Greatwood Community Primary School | Community | 30 | 30 |
| 2356 | Skipton, Water Street Community Primary School | Community | 30 | 30 |
| 3035 | Sleights Church of England Voluntary Controlled Primary School | Voluntary controlled | 15 | 15 |
| 2132 | Slingsby Community Primary School | Community | 11 | 11 |
| 3108 | Snainton Church of England Voluntary Controlled Primary School | Voluntary controlled | 10 | 10 |
| 2133 | Snape Community Primary School | Community | 7 | 7 |
| 3109 | South Kilvington Church of England Voluntary Controlled Primary School | Voluntary controlled | 12 | 12 |
| 2357 | South Milford Primary School | Academy converter | 30 | 30 |
| 3291 | South Otterington Church of England Primary School | Academy converter | 20 | 20 |
| 2183 | Sowerby Primary Academy | Academy converter | 45 | 45 |
| 3110 | Spennithorne Church of England Primary School | Voluntary controlled | 12 | 12 |
| 3275 | Spofforth Church of England Controlled Primary School | Voluntary controlled | 15 | 15 |
| 3600 | St Benedict's Roman Catholic Primary School, Ampleforth | Voluntary aided | 15 | 15 |
| 3225 | St Cuthbert's Church of England Primary School, Pateley Bridge | Voluntary controlled | 17 | 17 |
| 3631 | St George's Roman Catholic Primary School | Voluntary aided | 15 | 15 |
| 3602 | St Hedda's Roman Catholic Primary School | Voluntary aided | 7 | 7 |
| 3005 | St Hilda's Ampleforth Church of England Voluntary Controlled Primary School | Voluntary controlled | 7 | 7 |
| 3620 | St Hilda's Roman Catholic Primary School | Voluntary aided | 15 | 15 |
| 3376 | St Joseph's Catholic Primary School | Voluntary aided | 10 | 15 |
| 3378 | St Joseph's Catholic Primary School, Harrogate, A Voluntary Academy | Academy converter | 30 | 30 |
| 3610 | St Joseph's Roman Catholic Primary School, Pickering | Voluntary aided | 15 | 15 |
| 3326 | St Martin's Church of England Voluntary Aided Primary School, Scarborough | Voluntary aided | 40 | 40 |
| 3373 | St Mary's Catholic Primary School | Voluntary aided | 30 | 30 |
| 3609 | St Mary's Catholic Primary School, Malton | Voluntary aided | 20 | 30 |
| 3371 | St Mary's Primary School Knaresborough, A Voluntary Catholic Academy | Academy converter | 30 | 30 |
| 3614 | St Mary's Roman Catholic Primary School, Richmond | Voluntary aided | 30 | 30 |
| 3124 | St Nicholas Church of England Primary School, West Tanfield | Voluntary controlled | 10 | 10 |
| 3304 | St Peter's Brafferton Church of England Voluntary Aided Primary School | Voluntary aided | 13 | 13 |
| 3247 | St Peter's Church of England Primary School | Academy converter | 41 | 41 |
| 3615 | St Peter's Roman Catholic Primary School | Voluntary aided | 30 | 30 |
| 3377 | St Robert's Catholic Primary School, Harrogate | Voluntary aided | 40 | 40 |
| 2003 | St Stephen's Catholic Primary School and Nursery, A Voluntary Academy | Academy sponsor led | 28 | 28 |
| 3372 | St Wilfrid's Catholic Primary School | Voluntary aided | 20 | 20 |
| 2061 | Staithe, Seton Community Primary School | Community | 15 | 15 |
| 2217 | Stakesby Primary Academy | Academy converter | 34 | 34 |
| 2332 | Starbeck Community Primary School | Community | 50 | 50 |
| 2358 | Staveley Community Primary School | Community | 10 | 10 |
| 2002 | Staynor Hall Primary Academy | Academy sponsor led | 30 | 30 |
| 2138 | Stillington Primary School | Community | 12 | 7 |
| 2139 | Stokesley Primary Academy | Academy converter | 58 | 58 |
| 2335 | Summerbridge Community Primary School | Community | 12 | 12 |
| 3276 | Sutton in Craven Church of England Voluntary Controlled Primary School | Voluntary controlled | 15 | 15 |
| 3113 | Sutton on the Forest Church of England Voluntary Controlled Primary School | Voluntary controlled | 13 | 13 |
| 2359 | Sutton-in-Craven Community Primary School | Community | 30 | 30 |
| 2392 | Tadcaster Primary Academy | Academy converter | 28 | 28 |
| 3331 | Terrington Church of England Voluntary Aided Primary School | Voluntary aided | 9 | 9 |
| 3351 | The Boyle and Petyt Primary School | Voluntary aided | 8 | 8 |
| 2237 | Thirsk Community Primary School | Community | 42 | 42 |
| 2000 | Thomas Hinderwell Primary Academy | Academy sponsor led | 40 | 40 |
| 3117 | Thornton Dale CofE (VC) Primary School | Voluntary controlled | 26 | 26 |
| 2360 | Thornton in Craven Community Primary School | Community | 11 | 11 |
| 3119 | Thornton Watlass Church of England Primary School | Voluntary controlled | 7 | 7 |
| 2381 | Thorpe Willoughby Community Primary School | Community | 45 | 45 |
| 3277 | Threshfield School | Voluntary controlled | 17 | 17 |
| 3278 | Tockwith Church of England Primary Academy | Academy converter | 30 | 30 |
| 3120 | Topcliffe CofE Academy | Academy converter | 15 | 15 |
| 3034 | Trinity Academy Eppleby Forcett | Academy converter | 7 | 7 |
| 3079 | Trinity Academy Middleton Tyas | Academy converter | 22 | 22 |
| 2007 | Trinity Academy Richmond | Academy sponsor led | 45 | 45 |
| 3122 | Warthill Church of England Voluntary Controlled Primary School | Voluntary controlled | 6 | 6 |

| DfE No. 815- | School | Aided, Academy, Trust etc | Published Admission Number 2019/20 | Proposed Published Admission Number 2020/21 |
|-----------------|--|---------------------------|--|--|
| 2188 | Wavell Community Junior School | Community | 60 | 60 |
| 3163 | Weaverthorpe Church of England Voluntary Controlled Primary School | Voluntary controlled | 7 | 7 |
| 2151 | Welburn Community Primary School | Community | 10 | 10 |
| 3016 | West Burton Church of England Primary School | Voluntary controlled | 7 | 7 |
| 2197 | West Cliff Primary School | Academy converter | 30 | 30 |
| 3165 | West Heslerton Church of England Voluntary Controlled Primary School | Voluntary controlled | 10 | 10 |
| 2333 | Western Primary School | Academy converter | 60 | 60 |
| 2206 | Wheatcroft Community Primary School | Community | 30 | 30 |
| 2363 | Whitley and Eggborough Community Primary School | Community | 40 | 40 |
| 2364 | Willow Tree Community Primary School | Community | 75 | 75 |
| 3282 | Wistow Parochial Church of England Voluntary Controlled Primary School | Voluntary controlled | 20 | 20 |
| 2430 | Woodfield Primary School | Community | 30 | 30 |
| 3130 | Wykeham Church of England Voluntary Controlled Primary School | Voluntary controlled | 8 | 8 |

| DFE No. 815- | School | Aided, Academy, Trust etc | Published Admission Number 2019/2020 | Published Admission Number 2019/2020 sixth form where applicable | Proposed Published Admission Limit 2020/21 | Proposed Published Admission Limit 2020/21 Sixth form where applicable |
|--------------|--|------------------------------|--------------------------------------|--|--|--|
| 4232 | Barlby High School | Academy converter | 151 | Not applicable | 151 | Not applicable |
| 4052 | Bedale High School | Community | 187 | Not applicable | 187 | Not applicable |
| 4221 | Boroughbridge High School | Community | 128 | 15 | 128 | 15 |
| 4003 | Brayton Academy | Academy sponsor led | 241 | Not applicable | 241 | Not applicable |
| 4039 | Caedmon College Whitby | Community | 184 | 20 | 184 | 20 |
| 4006 | Outwood Academy Easingwold | Academy sponsor led | 210 | 75 | 210 | 75 |
| 4001 | EBOR Academy Filey | Academy sponsor led | 112 | Not applicable | 112 | Not applicable |
| 4608 | Ermysted's Grammar School | Voluntary aided | 120 | 20 | 120 | 20 |
| 4041 | Eskdale School | Community | 110 | Not applicable | 110 | Not applicable |
| 4069 | George Pindar School | Foundation | 187 | Not applicable | 187 | Not applicable |
| 4070 | Graham School | Community | 290 | Not applicable | 290 | Not applicable |
| 4200 | Harrogate Grammar School | Academy converter | 260 | 80 | 260 | 80 |
| 4219 | Harrogate High School | Academy converter | 125 | 15 | 125 | 15 |
| 4610 | Holy Family Catholic High School, Carlton | Voluntary aided | 90 | Not applicable | 90 | Not applicable |
| 4202 | King James's School | Community | 267 | 35 | 267 | 35 |
| 4054 | Lady Lumley's School | Community | 184 | 30 | 184 | 30 |
| 4077 | Malton School | Community | 140 | 80 | 140 | 20 |
| 4223 | Nidderdale High School | Community | 85 | Not applicable | 85 | Not applicable |
| 4074 | Northallerton School & Sixth Form College | Voluntary controlled | 250 | 65 | 225 | 65 |
| 4152 | Norton College | Academy converter | 160 | 120 | 160 | 120 |
| 4076 | Richmond School* | Academy converter | 260 | 80 | 250 | 80 |
| 4215 | Ripon Grammar School | Community | 117 inc 14 boarders | 30 | 117 inc 14 boarders | 30 |
| 4203 | Outwood Academy Ripon | Academy converter | 135 | 15 | 131 | 0 |
| 4004 | Risedale Sports and Community College | Community | 185 | Not applicable | 185 | Not applicable |
| 4217 | Rossett School | Academy converter | 235 | 15 | 235 | 15 |
| 4022 | Ryedale School | Community | 140 | Not applicable | 140 | Not applicable |
| 4073 | Scalby School | Academy converter | 192 | Not applicable | 192 | Not applicable |
| 4002 | Scarborough University Technical College | University technical college | 150 | 150 | 150 | 150 |
| 4225 | Selby High School Specialist School for the Arts and Science | Community | 237 | Not applicable | 237 | Not applicable |
| 4205 | Settle College | Community | 125 | 20 | 115 | 20 |
| 4216 | Sherburn High School | Community | 197 | 0 | 197 | Not applicable |
| 4518 | Skipton Girls' High School | Academy converter | 116 | 35 | 116 | 35 |
| 4210 | South Craven School | Academy converter | 270 | 42 | 270 | 42 |
| 4611 | St Aidan's Church of England High School | Academy converter | 250 | 100 | 250 | 100 |
| 4604 | St Augustine's Roman Catholic School, Scarborough | Voluntary aided | 96 | Not applicable | 96 | Not applicable |
| 4605 | St Francis Xavier School | Voluntary aided | 90 | Not applicable | 90 | Not applicable |

| DFE No. 815- | School | Aided, Academy, Trust etc | Published Admission Number 2019/2020 | Published Admission Number 2019/2020 sixth form where applicable | Proposed Published Admission Limit 2020/21 | Proposed Published Admission Limit 2020/21 Sixth form where applicable |
|--------------|-------------------------------------|---------------------------|--------------------------------------|--|--|--|
| 4609 | St John Fisher Catholic High School | Voluntary aided | 210 | 30 | 210 | 30 |
| 4047 | Stokesley School* | Academy converter | 218 | 20 | 189 | 20 |
| 4211 | Tadcaster Grammar School | Academy converter | 262 | 10 | 262 | 10 |
| 4000 | The Skipton Academy | Academy sponsor led | 167 | Not applicable | 167 | Not applicable |
| 4075 | The Wensleydale School & Sixth Form | Community | 88 | 20 | 88 | 20 |
| 4035 | Thirsk School & Sixth Form College | Community | 180 | 10 | 180 | 10 |
| 4206 | Upper Wharfedale School | Community | 58 | Not applicable | 58 | Not applicable |

* Both these academies are out to consultation until 31 January 2019. Any changes will be reported.

